

TECHNICAL MANUAL

**ORGANIZATIONAL AND DIRECT SUPPORT
MAINTENANCE REPAIR PARTS AND
SPECIAL TOOLS LIST**

FOR

**OUTBOARD MOTOR, GASOLINE
OMC MODEL AM-40A
NSN 2805-01-105-1680**

HEADQUARTERS, DEPARTMENT OF THE ARMY

1 OCTOBER 1982

CHANGE }
NO. 1 }

HEADQUARTERS
DEPARTMENT OF THE ARMY
WASHINGTON, D.C., 26 January 1984

Organizational and Direct Support
Maintenance Repair Parts and
Special Tools List

OUTBOARD MOTOR, GASOLINE
OMC MODEL AM-40A
NSN 2805-01-105-1680

TM 5-2805-261-23P, 1 October 1982, is changed as follows:

1. Remove and insert pages as indicated below.

	Remove pages	Insert pages
Section II	5 and 6 9 thru 12 19 thru 22 25 thru 32 35 thru 38 41 and 42	5 and 6 9 thru 12 19 thru 22 25 thru 32 35 thru 38 41 and 42
Section III	47	47
Section IV	53 and 54	53 thru 55

2. New or changed text material is indicated by a vertical bar in the margin. An illustration change is indicated by a miniature pointing hand.
3. Retain this sheet in front of manual for reference purposes.

By Order of the Secretary of the Army:

JOHN A. WICKHAM, JR.
General, United States Army
Chief of Staff

Official:

ROBERT M. JOYCE
Major General, United States Army
The Adjutant General

DISTRIBUTION:

To be distributed in accordance with DA Form 12-25D, Organizational Maintenance Requirements for Special Equipment: Outboard Motors.

**ORGANIZATIONAL AND DIRECT SUPPORT
MAINTENANCE REPAIR PARTS AND
SPECIAL TOOLS LIST**

FOR

**OUTBOARD MOTOR, GASOLINE
OMC MODEL AM-40A
NSN 2805-01-105-1680**

Current as of 28 April 1982

REPORTING OF ERRORS

You can help improve this manual. If you find any mistake or if you know of a way to improve the procedures, please let us know. Mail your letter, DA Form 2028 (Recommended Changes to Publications and Blank Forms), or DA Form 2028-2 located in the back of this manual direct to: Commander, US Army Troop Support & Aviation Materiel Readiness Command, ATTN: DRSTS-MPSD, 4300 Goodfellow Blvd., St. Louis, MO 63120. A reply will be furnished directly to you.

TABLE OF CONTENTS

	Page	Illus Figure
Section I. Introduction	1	
Section II. Repair Parts List	4	
Group 01 Motor Cover	4	1
02 Rewind Starter	8	2
03 Magneto	10	3
04 Fuel Tank	14	4
05 Fuel Pump	18	5
06 Carburetor	20	6
07 Intake Manifold	24	7
08 Crankshaft and Piston	26	8
09 Cylinder and Crankcase	28	9
10 Exhaust Housing	33	10
11 Gearcase	40	11
12 Bulk Materials	44	
Section III. Special Tools List	46	
Group 13 Special Tools	47	12
Section IV. NSN Part Number Index	48	

**ORGANIZATIONAL AND DIRECT SUPPORT
MAINTENANCE
REPAIR PARTS AND SPECIAL TOOLS LIST**

Section I. INTRODUCTION

1. Scope.

This manual lists spares and repair parts; special tools; special test, measurement, and diagnostic equipment (TMDE), and other special support equipment required for performance of organizational and direct support maintenance of the Outboard Motor. It authorizes the requisitioning and issue of spares and repair parts as indicated by the source and maintenance codes.

2. General.

This Repair Parts and Special Tools List is divided into the following sections:

a. *Section II. Repair Parts List.* A list of spares and repair parts authorized for use in the performance of maintenance. The list also includes parts which must be removed for replacement of the authorized parts. Parts lists are composed of functional groups in numeric sequence, with the parts in each group listed in figure and item number sequence. Bulk materials are listed in NSN sequence.

b. *Section III. Special Tools List.* A list of special tools, special TMDE, and other special support equipment authorized for the performance of maintenance.

c. *Section IV. National Stock Number and Part Number Index.* A list, in National item identification number (NIIN) sequence, of all National stock numbers (NSN) appearing in the listings, followed by a list in alphameric sequence of all part numbers appearing in the listings. National stock numbers and part numbers are cross-referenced to each illustration figure and item number appearance. This index is followed by a cross-reference list of reference designators to figure and item numbers.

3. Explanation of Columns.

a. *Illustration.* This column is divided as follows:

(1) *Figure Number.* Indicates the figure number of the illustration on which the item is shown.

(2) *Item Number.* The number used to identify item called out in the illustration.

b. *Source, Maintenance, and Recoverability (SMR) Codes.*

(1) *Source Code.* Source codes indicate the manner of acquiring support items for maintenance, repair, or overhaul of end items. Source codes are entered in the first and second positions of the Uniform SMR Code format as follows:

<i>Code</i>	<i>Definition</i>
PA	- Item procured and stocked for anticipated or known usage.
PB	- Item procured and stocked for insurance purpose because essentiality dictates that a minimum quantity be available in the supply system.
PC	- Item procured and stocked and which otherwise would be coded PA except that it is deteriorative in nature.
PD	- Support item, excluding support equipment, procured for initial issue or outfitting and stocked only for subsequent or additional initial issues or outfittings. Not subject to automatic replenishment.
PE	- Support equipment procured and stocked for initial issue or outfitting to specified maintenance repair activities.
PF	- Support equipment which will not be stocked but which will be centrally procured on demand.
PG	- Item procured and stocked to provide for sustained support for the life of the equipment. It is applied to an item peculiar to the equipment which, because of probable discontinuance or shutdown of production facilities, would prove uneconomical to reproduce at a later time.
KD	- An item of a depot overhaul/repair kit and not purchased separately. Depot kit defined as a kit that provides items required at the time of overhaul or repair.
KF	- An item of a maintenance kit and not purchased separately. Maintenance kit defined as a kit that provides an item that can be replaced at organizational or intermediate levels of maintenance.
KB	- Item included in both a depot overhaul/repair kit and a maintenance kit.
MO	- Item to be manufactured or fabricated at organizational level.
MF	- Item to be manufactured or fabricated at the direct support maintenance level.
MH	- Item to be manufactured or fabricated at the general support maintenance level.
MD	- Item to be manufactured or fabricated at the depot maintenance level.
AO	- Item to be assembled at organizational level.
AF	- Item to be assembled at direct support maintenance level.
AH	- Item to be assembled at general support maintenance level.
AD	- Item to be assembled at depot maintenance level.
XA	- Item is not procured or stocked because the requirements for the item will result in the replacement of the next higher assembly.
XB	- Item is not procured or stocked. If not available through salvage, requisition.

Code	Definition
XC	Installation drawing, diagram, instruction sheet, field service drawing, that is identified by manufacturer's part number.
XD	A support item that is not stocked. When required, item will be procured through normal supply channels.

NOTE: Cannibalization or salvage may be used as a source of supply for any items coded above except those coded XA and aircraft support items as restricted by AR 70042.

(2) *Maintenance Code.* Maintenance codes are assigned to indicate the levels of maintenance authorized to USE and REPAIR support items. The maintenance codes are entered in the third and fourth positions of the Uniform SMR Code format as follows:

(a) The maintenance code entered in the third position will indicate the lowest maintenance level authorized to remove, replace, and use the support item. The maintenance code entered in the third position will indicate one of the following levels of maintenance:

Code	Application/Explanation
C	Crew or operator maintenance performed within organizational maintenance.
O	Support item is removed, replaced, used at the organizational level.
F	Support item is removed, replaced, used at the direct support level.
H	Support item is removed, replaced, used at the general support level.
D	Support items that are removed, replaced, used at depot, mobile depot, or specialized repair activity only.

(b) The maintenance code entered in the fourth position indicates whether the item is to be repaired and identifies the lowest maintenance level with the capability to perform complete repair (i.e., all authorized maintenance functions). This position will contain one of the following maintenance codes.

Code	Application/Explanation
O	The lowest maintenance level capable of complete repair of the support item is the organizational level.
F	The lowest maintenance level capable of complete repair of the support item is the direct support level.
H	The lowest maintenance level capable of complete repair of the support item is the general support level.
D	The lowest maintenance level capable of complete repair of the support item is the depot level.
L	Repair restricted to (enter applicable designated specialized repair activity), Specialized Repair Activity.
Z	Nonreparable. No repair is authorized.
B	No repair is authorized. The item may be reconditioned by adjusting, lubricating, etc., at the user level. No parts or special tools are procured for the maintenance of this item.

(3) *Recoverability Code.* Recoverability codes are assigned to support items to indicate the disposition action on unserviceable items. The recoverability code is entered in the fifth position of the Uniform SMR Code format as follows:

Recoverability Codes	Definition
Z	Nonreparable item. When unserviceable, condemn and dispose at the level indicated in position 3.
O	Reparable item. When uneconomically repairable, condemn and dispose at organizational level.
F	Reparable item. When uneconomically repairable, condemn and dispose at the direct support level.
H	Reparable item. When uneconomically repairable, condemn and dispose at the general support level.
D	Reparable item. When beyond lower level repair capability, return to depot. Condemnation and disposal not authorized below depot level.
L	Reparable item. Repair, condemnation, and disposal not authorized below depot/specialized repair activity level.
A	Item requires special handling or condemnation procedures because of specific reasons (i.e., precious metal content, high dollar value, critical material or hazardous material). Refer to appropriate manuals/ directives for specific instructions.

c. *National Stock Number.* Indicates the National stock number assigned to the item and which will be used for requisitioning.

d. *Federal Supply Code for Manufacturer (FSCM).* The FSCM is a 5-digit numeric code listed in SB 708-42 which is used to identify the manufacturer, distributor, or Government agency, etc.

NOTE: When a stock numbered item is requisitioned, the item received may have a different part number than the part being replaced.

e. *Part Number.* Indicates the primary number used by the manufacturer (individual, company, firm, corporation, or Government activity), which controls the design and characteristics of the item by means of its engineering drawings, specifications, standards, and inspection requirements to identify an item or range of items.

f. *Description.* Indicates the Federal item name and, if required, a minimum description to identify the item. Items that are included in kits and sets are listed below the name of the kit or set with the quantity of each item in the kit or set indicated in the quantity incorporated in unit column. When the part to be used differs between serial numbers of the same model, the effective serial numbers are shown as the last-line of the description. In the Special Tools List, the initial basis of issue (BOI) appears

as the last line in the entry for each special tool, special TMDE, and other special support equipment. When density of equipments supported exceeds density spread indicated in the basis of issue, the total authorization is increased accordingly.

g. *Unit of Measure (U/M)*. Indicates the standard of the basic quantity of the listed item as used in performing the actual maintenance function. This measure is expressed by a two-character alphabetical abbreviation (e.g., ea, in, pr, etc). When the unit of measure differs from the unit of measure will be requisitioned.

h. *Quantity Incorporated in Unit*. Indicates the quantity of the item used in the breakout shown on the illustration figure, which is prepared for a functional group, subfunctional group, or an assembly. A "V" appearing in this column in lieu of a quantity indicates that no specific quantity is applicable, (e.g., shims, spacers, etc).

4. Special Information.

a. Usable on codes are shown in the description column. Uncoded items are applicable to all models. Identification of the usable codes used in this publication are:

<i>Code</i>	<i>Used On</i>
None	All

b. Detailed manufacturing instructions for items source coded to be manufactured or fabricated are found in TM 5-2805-261-13. Bulk materials required to manufacture items are listed in the Bulk Material Group of this manual.

c. Detailed assembly instructions for items source coded to be assembled are found in TM 5-2805-261-14. Assembly components are listed immediately following the item to be assembled.

d. Repair parts kits and gasket sets (enter either "appear as the last entries in the repair parts listing for the figure in which its parts are listed as repair parts" or "are listed at the end of the repair parts listing for the last figure containing parts of the kit").

e. The following publications pertain to the Outboard Motor and its components:

Publication and Short Title

- LO 5-2805-261-12, Outboard Motor, Gasoline Engine
- TM 5-2805-261-13, Outboard Motor, Gasoline Engine

5. How to Locate Repair Parts.

a. *When National Stock Number or Part Number is Unknown:*

(1) *First* Using the table of contents, determine the group within which the item belongs. This is necessary since illustrations are prepared for groups, and listings are divided into the same groups.

(2) *Second*. Find the illustration covering the group to which the item belongs.

(3) *Third*. Identify the item on the illustration and note the illustration figure and item number of the item.

(4) *Fourth*. Using the Repair Parts Listing, find the figure and item number noted on the illustration.

b. *When National Stock Number or Part Number is Known:*

(1) *First*. Using the Index of National Stock Numbers and Part Numbers, find the pertinent National stock number or part number. This index is in NIIN sequence followed by a list of part numbers in alphameric sequence, cross-referenced to the illustration figure number and item number.

(2) *Second*. After finding the figure and item number, locate the figure and item number in the repair parts list.

6. Abbreviations.

<i>Abbreviations</i>	<i>Explanation</i>
&	and
assy	assembly
c'case	crankcase
exh	exhaust
hsg	housing
in.	inch
mtg	mounting
O.S.	oversize
P/N	part number
std	standard

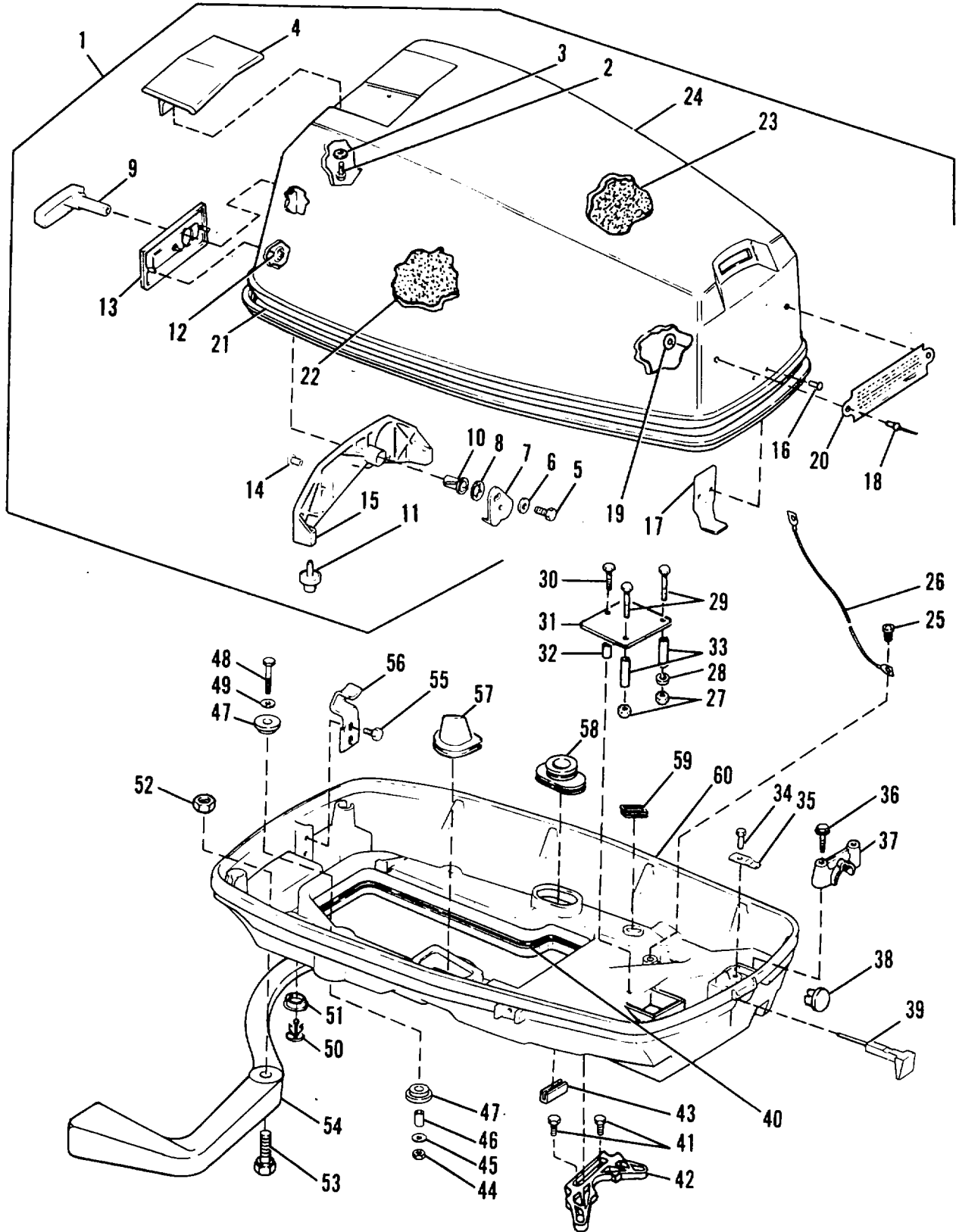


Figure 1. Motor Cover

(1) ILLUSTRATION		(2)	(3)	(4)	(5)	(6)	(7)	(8)
(a) FIG NO.	(b) ITEM NO.	SMR CODE	FEDERAL STOCK NUMBER	FSCM	PART NUMBER	DESCRIPTION <i>USABLE ON CODE</i>	U/M	QTY INC IN UNIT
						GROUP 01 MOTOR COVER		
1	1	PBOOF		80256	392572	COVER ASSY, MOTOR	EA	1
1	2	PAOZZ	5305-00-435-0562	80256	312299	.SCREW, HEX HEAD	EA	2
1	3	PAOZZ	5310-00-291-4101	80256	301814	.WASHER, FLAT	EA	2
1	4	XDOZZ		80256	315151	.HANDLE, TILT	EA	1
1	5	PAOZZ	5305-01-134-5523	80256	122147	.SCREW, HEX HEAD	EA	1
1	6	PAOZZ	5310-00-123-2610	32195	304051	.WASHER, FLAT	EA	1
1	7	XDOZZ		80256	323236	.HOOK, LATCH	EA	1
1	8	PAOZZ	5310-00-176-6464	32195	553766	.WASHER, SPRING TENS I	EA	1
1	9	PAOZZ		80256	325357	.HANDLE & SHAFT ASSY	EA	1
1	10	PAOZZ	2910-00-115-2547	32195	308532	.BUSHING, THROTTLE SH	EA	2
1	11	PAOZZ	5340-01-072-3043	80256	315159	.BUMPER	EA	2
1	12	PAOZZ	2805-00-250-9979	80256	317223	.FASTENER	EA	3
1	13	PDOZZ		80256	325675	.COVER, LATCH	EA	1
1	14	PAOZZ	5320-01-135-4183	30256	326948	.RIVET, BRACKET	EA	4
1	15	PDOZZ		80256	326954	.BRACKET, LOCATING	EA	1
1	16	PAOZZ	5320-00-001-9101	80256	554355	.RIVET, HOOK	EA	2
1	17	XDOZZ		80256	320732	.HOOK, MOTOR COVER	EA	1
1	18	XDOZZ		80256	902413	.RIVET, PLATE	EA	2
1	19	PAOZZ		80256	327733	.WASHER, FLAT	EA	2
1	20	XDOZZ		80256	327735	.PLATE, STARTING INS	EA	1
1	21	PAOZZ	5330-01-134-0777	80256	317173	.SEAL, COVER.....	EA	1
1	22	PAOZZ		80256	319485	.BLANKET, SOUND, SID	EA	1
1	23	PAOZZ		80256	318571	.BLANKET, SOUND, TOP	EA	1
1	24	XAQZZ		80256	327736	.COVER, UPPER MOTOR	EA	1
1	25	PAOZZ	5305-01-079-9918	80256	311020	SCREW	EA	2
1	26	PAOZZ	2920-00-132-4676	32195	376349	GROUND STRAP, IGNITI.....	EA	1
1	27	PAOZZ	5310-00-121-8265	32195	301472	NUT, SPECIAL	EA	3
1	28	PAOZZ	5310-00-121-8338	80256	302290	WASHER, LOCK	EA	3
1	29	PAOZZ	5305-01-134-5524	80256	312495	SCREW, HEX HEAD	EA	2
1	30	PAOZZ	5305-01-134-5525	80256	303398	SCREW, HEX HEAD	EA	1
1	31	XDOZZ		80256	322824	BAFFLE.....	EA	2
	32	XDOZZ		80256	322823	SPACER.....	EA	2
1	33	XDOZZ		80256	322822	SPACER.....	EA	2
1	34	PAOZZ	5306-00-014-3331	80256	307029	SCREW, HEX HEAD	EA	1
1	35	XDOZZ		80256	315135	DETENT, CHOKE KNOB	EA	1
1	36	PAOZZ	5305-01-088-3315	80256	324474	SCREW, CAP, HEXAGON H.....	EA	2
1	37	XDOZZ		80256	325972	CLAMP.....	EA	1
1	38	PAOZZ	2910-01-133-3602	80256	317491	PLUG, CAP, LOWER CO	EA	1
1	39	PAOZZ		80256	388574	KNOB ASSY.....	EA	1
1	40	PAFZZ	5330-00-484-9922	80256	204866	SEAL, MOTOR COVER	EA	1

(1) ILLUSTRATION		(2)	(3)	(4)	(5)	(6)	(7)	(8)
(a) FIG NO.	(b) ITEM NO.	SMR CODE	FEDERAL STOCK NUMBER	FSCM	PART NUMBER	DESCRIPTION <i>USABLE ON CODE</i>	U/M	QTY INC IN UNIT
1	41	PAFZZ	5305-01-072-3056	80256	317581	SCREW	EA	2
1	42	XDFZZ		80256	321356	BRACKET, LOWER COVE	EA	1
1	43	PAFZZ	5330-00-238-7349	21119	553770	SEAL	EA	1
1	44	PAFZZ	5310-00-121-8284	32195	311375	NUT,DOUBLE END BOLT	EA	4
1	45	PAFZZ	5310-01-134-1942	80256	321376	WASHER, FLAT	EA	8
1	46	XDOZZ		80256	302406	SPACER, GROMMET	EA	4
1	47	PAOZZ	5365-00-275-4566	80256	302405	GROMMET	EA	8
1	48	PAOZZ	5305-01-134-0166	80256	324814	SCREW, CAP, HEX HEA	EA	4
1	49	PAOZZ	5310-00-123-2610	32195	304051	WASHER, FLAT	EA	4
1	50	PAOZZ	4730-01-133-7740	80256	321885	NIPPLE	EA	1
1	51	PAOZZ		80256	322086	PLUG	EA	1
1	52	PAOZZ	5310-00-658-3521	80256	303889	NUT, HEX HEAD	EA	2
1	53	PAOZZ	5305-01-134-5526	80256	316136	SCREW, HEX HEAD	EA	2
1	54	PAOZZ	2805-00-126-7392	80256	306236	HANDLE, CARRYING	EA	1
1	55	PAOZZ	5305-00-423-7658	32195	304027	SCREW, METAL	EA	2
1	56	XDOZZ		80256	323474	HOOK, COVER TO HOUS	EA	1
1	57	PAOZZ		80256	319389	GROMMET, SHIFTER LO	EA	1
1	58	PAOZZ	2805-00-057-6908	80256	304019	GROMMET, CONTROL SH	EA	1
1	59	PAOZZ	5325-01-133-9400	80256	318262	GROMMET, RUBBER	EA	1
1	60	PBFZZ	2805-01-119-5688	80256	323893	COVER, LOWER	EA	1

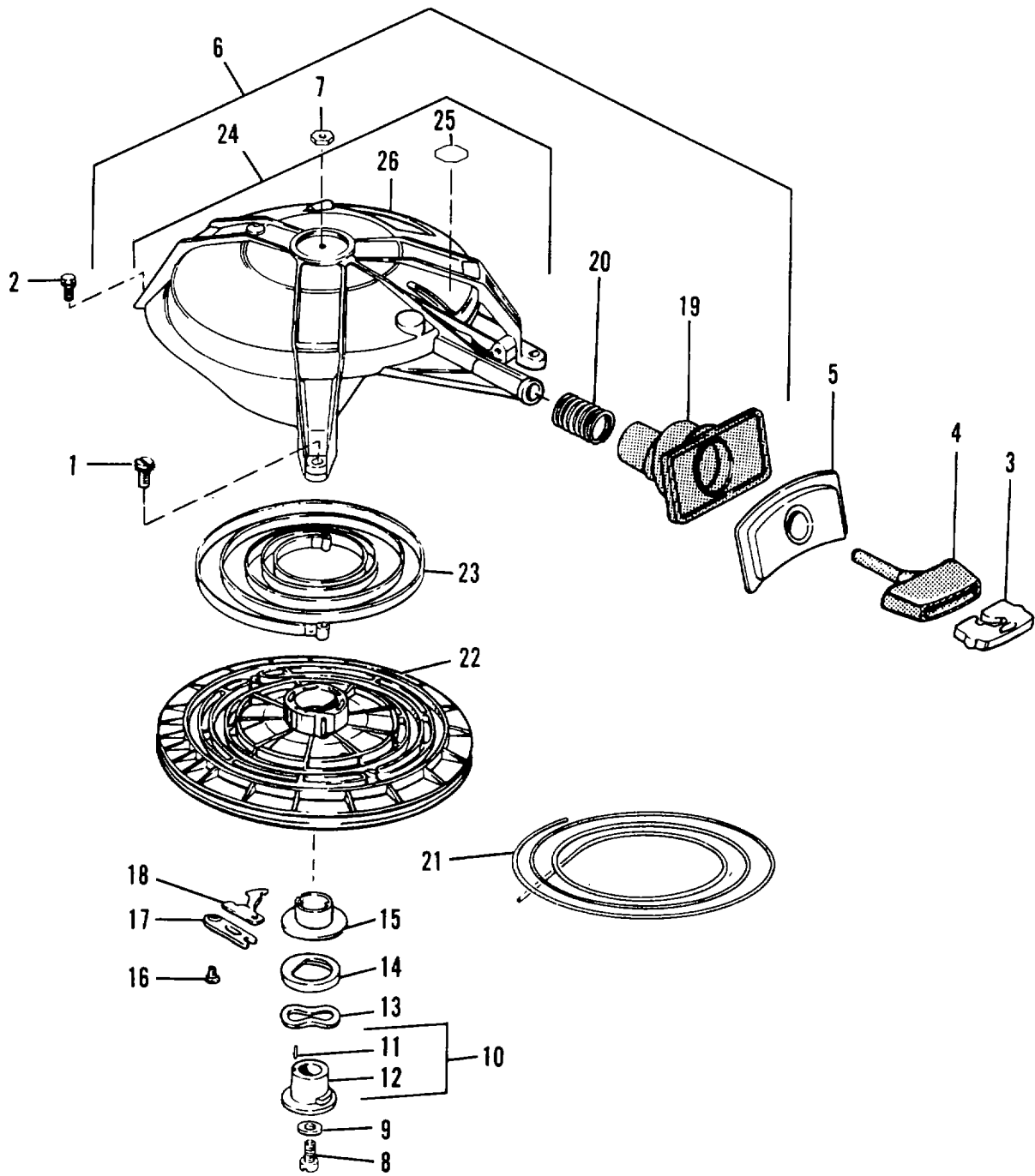


Figure 2. Rewind Starter

(1) ILLUSTRATION		(2)	(3)	(4)	(5)	(6)	(7)	(8)
(a) FIG NO.	(b) ITEM NO.	SMR CODE	FEDERAL STOCK NUMBER	FSCM	PART NUMBER	DESCRIPTION <i>USABLE ON CODE</i>	U/M	QTY INC IN UNIT
						GROUP 02 REWIND STARTER		
2	1	PAOZZ	5305-00-450-5745	80256	311563	SCREW, CAP, HEX HEAD	EA	2
2	2	PAOZZ	5306-00-177-5161	32195	308375	BOLT, ASSEMBLED WASH	EA	1
2	3	PAOZZ	2920-00-872-1486	80256	304325	ANCHOR, HANDLE	EA	1
2	4	PAOZZ	2990-01-135-4703	80256	317170	HANDLE, STARTER	EA	1
2	5	PAOZZ	2920-01-137-8740	80256	208424	PLATE, HANDLE	EA	1
2	6	PAOZZ	2990-01-088-5191	80256	385565	STARTER ASSY, REWIND	EA	1
2	7	PAOZZ	5310-00-2660489	32195	302103	.NUT, PLAIN, HEXAGON	EA	1
2	8	PAOZZ	3305-00-028-7939	32195	306284	.SCREW	EA	1
2	9	PAOZZ	5310-00-761-4240	84955	K674580-11	.WASHER, FLAT	EA	1
2	10	PAOZZ	2990-00-778-6032	21119	379067	.SPINDLE AND PIN ASS	EA	1
2	11	PAOZZ	5315-00-552-2152	21119	202156	.PIN, SPECIAL	EA	1
2	12	XAOZZ		80256	309514	.SPINDLE, STARTER	EA	1
2	13	PAOZZ	5310-00-778-6012	32195	309515	.WASHER, SPRING TENSI	EA	1
2	14	PAOZZ	2805-00-077-1737	32195	309516	.RING, FRICTION	EA	1
2	15	PAOZZ	3120-00-778-6007	80256	3J9513	.BUSHING, SPINDLE, STA	EA	1
2	16	PAOZZ	5305-00-118-1337	21119	307163	.SCREW	EA	3
2	17	PAOZZ	2805-00-353-1662	32195	202317	.RETAINER STARTER PA.....	EA	3
2	18	PAOZZ	3040-01-133-2033	80256	327398	.PAWL, STARTER	EA	3
2	19	PAOZZ	5325-01-072-3005	80256	204911	.GROMMET.....	EA	1
2	20	PAOZZ	5360-01-072-3006	80256	204913	.SPRING	EA	1
2	21	MOOZZ		80256	319080	.ROPE.....	EA	1
2	22	PDOZZ		80256	385690	.PULLEY, STARTER	EA	1
2	23	PAOZZ	2990-00-353-1804	80256	375836	.SPRING ASSEMBLY, FLA.....	EA	1
2	24	XDOZZ		80256	387923	.HOUSING, ASSY, STAR	EA	1
2	25	PAOZZ		80256	320022	..DECAL, WARNING	EA	1
2	26	XAOZZ		80256	385566	..HOUSING, STARTER	EA	1

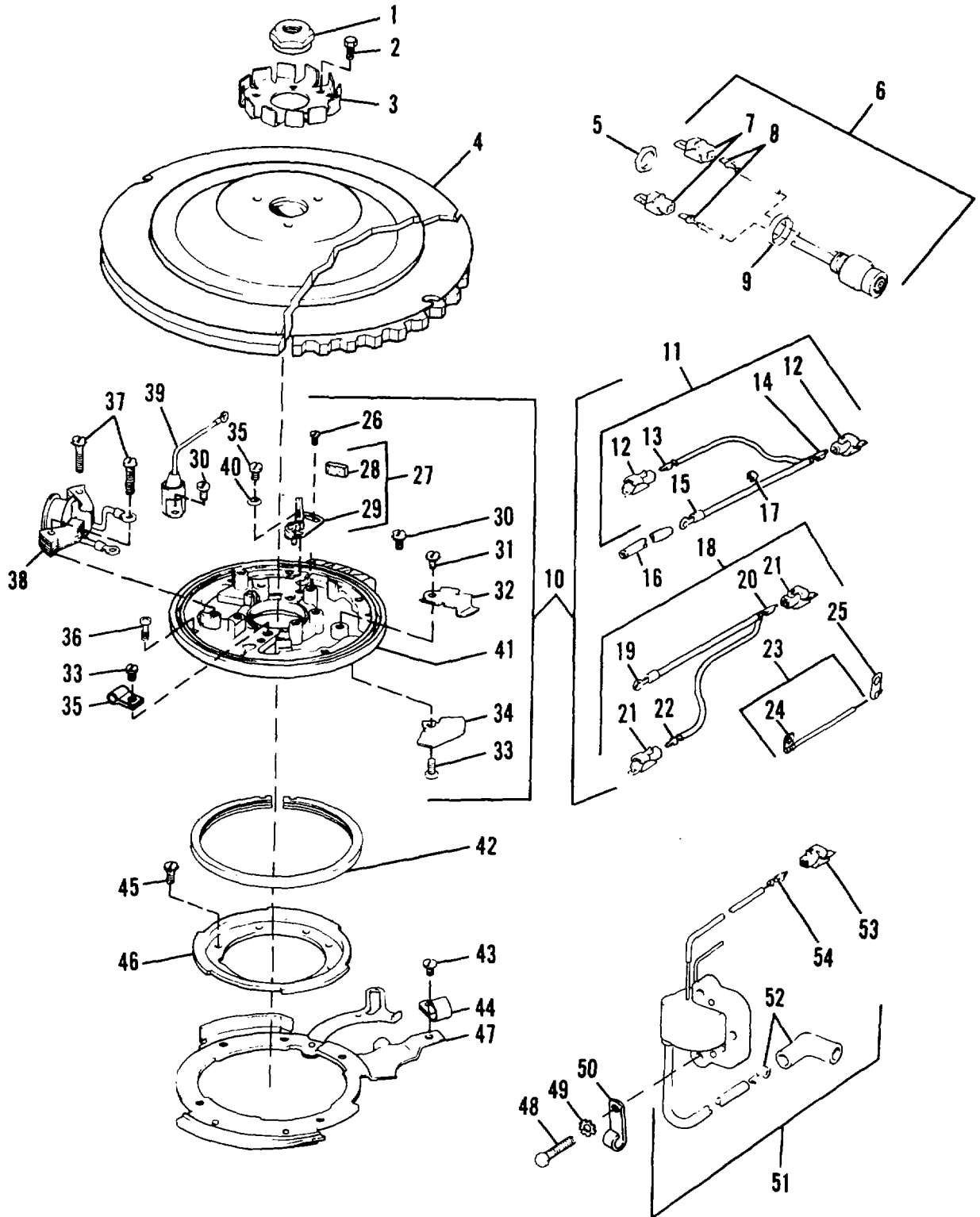


Figure 3. Magneto

(1) ILLUSTRATION		(2)	(3)	(4)	(5)	(6)	(7)	(8)
(a) FIG NO.	(b) ITEM NO.	SMR CODE	FEDERAL STOCK NUMBER	FSCM	PART NUMBER	DESCRIPTION USABLE ON CODE	U/M	QTY INC IN UNIT
						GROUP 03 MAGNETO		
3	1	PAOZZ	5310-00-118-5054	80256	308457	NUT, FLYWHEEL.....	EA	1
3	2	PAOZZ	5305-00-757-6568	80256	308072	SCREW.....	EA	3
3	3	PAOZZ	2990-00-353-1660	80256	202111	RATCHET WHEEL	EA	1
3	4	PAOZZ	2805-01-134-2204	80256	582293	FLYWHEEL ASSY.....	EA	1
3	5	PAOZZ	5310-00-564-4402	80256	313779	NUT	EA	1
3	6	PAOOZ	2920-00-077-1702	21119	379638	SWITCH, PUSH	EA	1
3	7	PAOZZ	5940-00-134-0700	32195	310572	..HOUSING	EA	2
3	8	PAOZZ	5940-01-132-9218	77060	6288953	..TERMINAL	EA	2
3	9	PAOZZ	2805-01-127-9951	80256	326048	RING, MOUNTING	EA	1
3	10	PAOOO	2805-01-119-5689	80256	581840	PLATE ASSY,ARMATUR.....	EA	1
3	11	PAOOO		80256	581838	..LEAD ASSY, UPPER.....	EA	1
3	12	PAOZZ	5940-00-134-0700	32195	310572	..HOUSING	EA	2
3	13	PAOZZ	5940-00-123-1061	80256	310523	..TERMINAL	EA	1
3	14	PAOZZ	5940-01-132-9218	77060	6288953	..TERMINAL	EA	1
3	15	PAOZZ		00779	60614-2	..TERMINAL, RING	EA	1
3	16	PAOZZ	4710-01-133-7895	80256	320288	..TUBING, LEADS	EA	1
3	17	PAOZZ	5340-01-091-0859	80256	511071	..SLEEVE, CLIP, COIL.....	EA	1
3	18	PAOOO		80256	581839	..LEAD ASSY, LOWER	EA	1
3	19	PAOZZ		00779	60614-2	..TERMINAL, RING.....	EA	1
3	20	PAOZZ	5940-01-132-9218	77060	6288953	..TERMINAL	EA	1
3	21	PAOZZ	5940-00-134-0700	32195	310572	..HOUSING	EA	2
3	22	PAOZZ		80256	310523	..TERMINAL	EA	1
3	23	PAOOO		80256	581320	..LEAD ASSY, GROUND	EA	1
3	24	PAOZZ		70903	ST5159	..TERMINAL, RING	EA	1
3	25	PAOZZ	5940-01-132-8243	77060	200179L/P	..TERMINAL, GROUND LE	EA	1
3	26	PAOZZ	5305-00-276-8536	80256	510194	..SCREW, MACHINE	EA	2
3	27	PAOOO	2920-01-087-4982	80256	581207	..BREAKER ASSY PART OF KIT P/N 172806	EA	2
3	28	KFOZZ		80256	581010	..WICK, OILER PART OF KIT PN 172806	EA	1
3	29	KFOZZ		80256	581567	..BASE ASSY, BREAKER PART OF KIT PIN 172806	EA	1
3	30	PAOZZ	5305-00-121-8155	80256	307019	..SCREW, ASSEMBLED WAS	EA	2
3	31	PAOZZ	5305-00-281-3144	80256	510193	..SCREW, ASSEMBLED WAS	EA	1
3	32	XDOZZ		80256	318954	..CLAMP, IGNITION COIL	EA	1
3	33	PAOZZ	5305-00-235-4474	80256	132812	..SCREW, MACHINE	EA	4
3	34	XDOZZ		80256	318909	..COVER, IGNITION COIL.....	EA	1
3	35	XDOZZ		80256	314200	..CLAMP, BREAKER BASE LEAD	EA	1
3	36	PAOZZ	5305-01-134-5527	80256	511195	..SCREW, PHILLIPS HEA	EA	5
3	37	PAOZZ	5305-00-574-5064	80256	510397	..SCREW, ASSEMBLED WAS	EA	4
3	38	PAOZZ	2990-01-123-5917	80256	581202	..COIL & LAMINATION	EA	1
3	39	PAOZZ	5910-01-086-7053	21119	581419	..CAPACITOR PART OF KIT P/N 172806	EA	2
3	40	PAOZZ	5310-00-276-2996	32195	510208	..WASHER, SPRING TENSI	EA	2

(1) ILLUSTRATION		(2)	(3)	(4)	(5)	(6)	(7)	(8)
(a) FIG NO.	(b) ITEM NO.	SMR CODE	FEDERAL STOCK NUMBER	FSCM	PART NUMBER	DESCRIPTION <i>USABLE ON CODE</i>	U/M	QTY INC IN UNIT
3	41	XAOZZ		80256	532067	.PLATE, ARMATURE	EA	1
3	42	PAOZZ	3110-01-101-5721	80256	322435	BEARING	EA	1
3	43	PAOZZ	5305-01-134-0069	80256	314492	SCREW, PAN HEAD	EA	1
3	44	XDOZZ		80256	319473	CLAMP, RETAINER.....	EA	1
3	45	PAOZZ	5305-01-123-5918	80256	335230	SCREW, PAN HEAD	EA	4
3	46	XDOZZ		80256	322102	SUPPORT, ARMATURE P	EA	1
3	47	XDOZZ		80256	392584	RETAINER, CAR & LIN	EA	1
3	48	PAOZZ	5305-00-040-3566	80256	309646	SCREW, HEX HEAD CAP	EA	4
3	49	PAOZZ	5310-00-153-2036	82195	306488	WASHER, LOCK	EA	2
3	50	PAOZZ		80256	310493	CLAMP, IGNITICN COI	EA	1
3	51	PAOOO		80256	581786	COIL ASSY, IGNITION.....	EA	2
3	52	PAOZZ	2920-00-254-5108	80256	581027	COVER & TERMINAL	EA	1
3	53	PAOZZ	5940-00-134-0700	82195	310572	.HOUSING	EA	1
3	54	PAOZZ	5940-01-132-9218	77060	6285953	.TERMINAL	EA	1
3		PAOZZ	2920-01-109-9685	80256	172806	KIT, IGNITION TUNE	EA	1
3	27					BREAKER ASSY	EA	2
3	28					WICK, OILER	EA	1
3	29					BASE ASSY, BREAKER	EA	1
3	39					CAPACITOR.....	EA	2

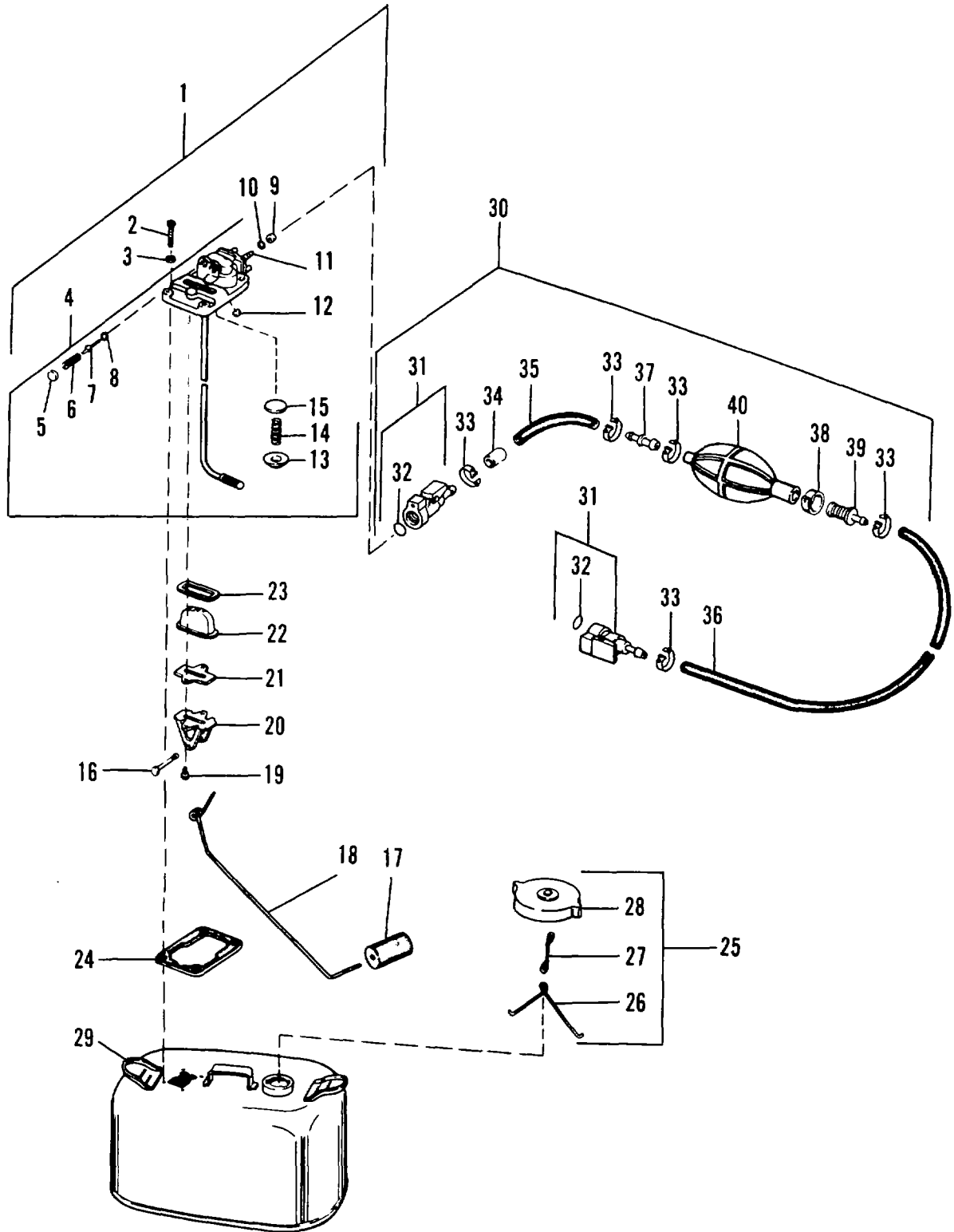


Figure 4. Fuel Tank

(1) ILLUSTRATION		(2)	(3)	(4)	(5)	(6)	(7)	(8)
(a) FIG NO.	(b) ITEM NO.	SMR CODE	FEDERAL STOCK NUMBER	FSCM	PART NUMBER	DESCRIPTION <i>USABLE ON CODE</i>	U/M	QTY INC IN UNIT
						GROUP 04 FUEL TANK		
4	1	PAOOO		80256	392587	TANK ASSY, FUEL	EA	1
4	2	PAOZZ	5305-00-145-7019		AN533-10-12	.SCREW, MACNINE	EA	4
				88044	PC503-10-12			
4	3	PAOZZ	5310-00-470-8365	21119	305863	.WASHER	EA	4
4	4	PAOOO	2910-00-369-8760	80256	381016	.HOUSING, UPPER	EA	1
4	5	PAOZZ	2913-00-470-7808	32195	303405	..PLUG, CORE	EA	2
4	6	PAOZZ	2910-00-400-6879	32195	307856	..SPRING, VALVE	EA	2
4	7	PAOZZ	2910-00-369-8449	32195	305859	..VALVE	EA	2
4	8	PAOZZ	5333-01-083-2213	21119	322598	..PACKING,PREFORMED VALVE SEAT	EA	2
4	9	PAOZZ	5310-00-081-4081	30256	307857	..WASHER, FLAT	EA	1
4	10	PAOZZ	5330-00-866-9656	32195	307858	..GASKET.....	EA	1
4	11	PAOZZ	2910-00-470-8775	32195	308081	..PIN, GUIDE.....	EA	1
4	12	PAOZZ	2910-00-470-8257	32195	305243	..PLUG, CORE	EA	1
4	13	PAOZZ	2805-00-236-9338	21119	307861	..RETAINER, DICS VALVE	EA	1
4	14	PAOZZ	5360-00-236-9335	80256	307860	..SPRING, HELICAL, COMP	EA	1
4	15	PAOZZ	2910-00-468-4324	21119	307862	..VALVE, DISC	EA	1
4	16	PAOZZ	6680-00-599-9410	80256	305821	.PIN, INDICATOR	EA	1
4	17	PAOZZ	2910-00-919-7366	80256	302559	.FLOAT, INDICATOR	EA	1
4	18	PAOZZ	6680-00-485-9528	32195	310845	.ARM, FLOAT	EA	1
4	19	PAOZZ	5305-00-409-2973	32195	310849	.SCREW	EA	2
4	20	PAOZZ	2810-00-001-9036	32195	312191	.SUPPORT, INDICATOR	EA	1
4	21	PAOZZ	5330-00-731-9084	32195	312193	.GASKET	EA	1
4	22	PAOZZ	2910-00-400-6878	32195	312190	.LENS, FUEL INDICATOR	EA	1
4	23	PAOZZ	5330-00-735-2810	32195	312192	.GASKET	EA	1
4	24	PAOZZ	5330-00-871-7119	32195	310984	.GASKET	EA	1
4	25	PAOOO		83256	388938	.CAP ASSY, FUEL TANK	EA	1
4	26	PAOZZ	2910-00-001-3841	83256	552331	..ANCHOR, CAP	EA	1
4	27	XAOZZ		80256	323369	..LINK, ANCHOR.....	EA	1
4	28	XAOZZ		80256	389742	..CAP ASSY, CAP	EA	1
4	29	XAOZZ		80256	392588	.TANK, FUEL	EA	1
4	30	PAOZZ	2910-00-400-2378	32195	386940	PRIMER ASSEMBLY, FUE	EA	1
4	31	PAOOZ	2835-00-078-2995	32195	376156	.CONNECTOR, ENGINE	EA	2
4	32	PAOZZ	2805-00-866-9640	32195	303598	..SEAL	EA	1
4	33	PAOZZ	4730-00-088-8878	80256	303596	.CLAMP, HOSE	EA	5
4	34	PAOZZ		80256	322695	.MARKER, HOSE	EA	1
4	35	MOOZZ		80256	305871	.HOSE, FUEL	EA	1
4	36	MOOZZ		80256	320417	.HOSE, FUEL	EA	1
4	37	PAOZZ	2913-00-778-6292	80256	383719	.VALVE, INLET	EA	1
4	38	PAOZZ	4730-00-102-9766	32195	553166	.CLAMP, HOSE	EA	1
4	39	PAOZZ	2910-00-369-8762	32195	383720	.VALVE, FUEL OUTLET	EA	1

(1) ILLUSTRATION		(2)	(3)	(4)	(5)	(6)	(7)	(8)
(a) FIG NO.	(b) ITEM NO.	SMR CODE	FEDERAL STOCK NUMBER	FSCM	PART NUMBER	DESCRIPTION <i>USABLE ON CODE</i>	U/M	QTY INC IN UNIT
4	40	PAOZZ	2910-00-11-4306	32195	553164	.BULB, PRIMER FUEL.....	EA	1

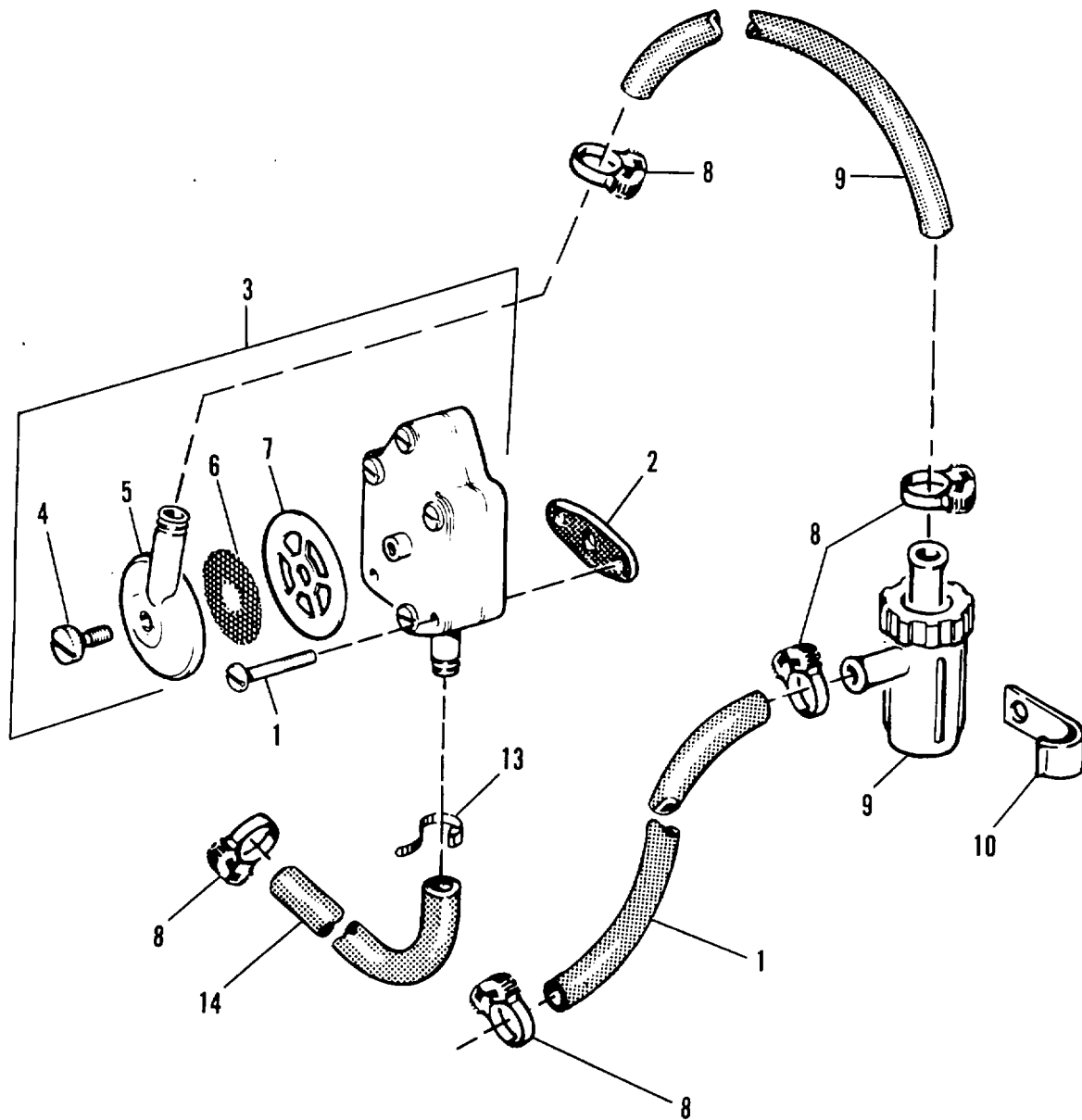


Figure 5. Fuel Pump

(1) ILLUSTRATION		(2)	(3)	(4)	(5)	(6)	(7)	(8)
(a) FIG NO.	(b) ITEM NO.	SMR CODE	FEDERAL STOCK NUMBER	FSCM	PART NUMBER	DESCRIPTION <i>USABLE ON CODE</i>	U/M	QTY INC IN UNIT
						GROUP 05 FUEL PUMP		
5	1	PAOZZ	5305-00-181-0799	32195	314417	SCREW	EA	2
5	2	PAOZZ	5330-00-053-0756	32195	303615	GASKET PART OF KIT P/N 390700	EA	1
5	3	PAOOO	2910-01-014-9420	32195	385781	PUMP ASSEMBLY, FUEL	EA	1
5	4	PAOZZ	5305-00-001-9038	80256	312677	.SCREW, KNURLED HEA	EA	1
5	5	PAOZZ	2910-01-133-7859	80256	322759	.CAP, FILTER	EA	1
5	6	PAOZZ	2910-00-115-4279	21119	312675	.STRAINER ELEMENT, SE	EA	1
5	7	PAOZZ	5330-00-115-4278	32195	12679	.GASKET	EA	1
5	8	PAOZZ	4730-01-110-8631	30256	322652	CLIP STRAP HOSE	EA	5
5	9	PAZZ	4720-01-139-4519	80256	319739	HOSE, FILTER TO FUE	EA	1
5	10	PAOZZ	5340-01-090-5173	80256	310439	CLAMP, FILTER TO BY	EA	1
5	11	PAOZZ	2940-01-111-6485	32195	388742	FILTER ASSY, FUEL	EA	1
5	12	MOOZZ		80256	323090	HOSE, FILTER TO CON	EA	1
5	13	PAOZZ	5340-01-091-0855	32195	320107	TIE STRAP	EA	1
5	14	MOOZZ		80256	319729	HOSE, PUMP TO CARBU	EA	1

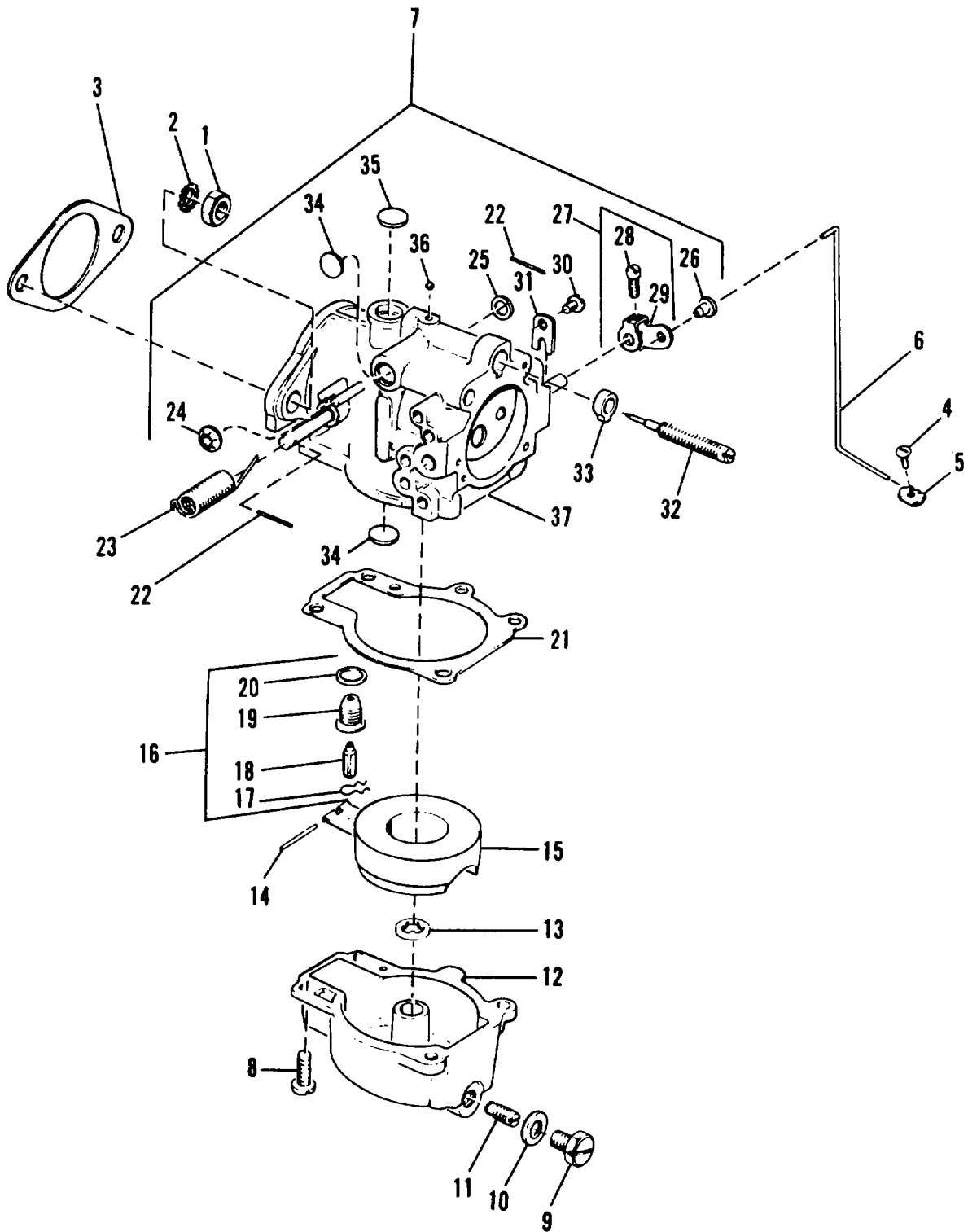


Figure 6. Carburetor

(1) ILLUSTRATION		(2)	(3)	(4)	(5)	(6)	(7)	(8)
(a) FIG NO.	(b) ITEM NO.	SMR CODE	FEDERAL STOCK NUMBER	FSCM	PART NUMBER	DESCRIPTION <i>USABLE ON CODE</i>	U/M	QTY INC IN UNIT
GROUP 06 CARBURETOR								
6	1	PAOZZ	5310-01-077-0421	80256	306422	NUT	EA	2
6	2	PAOZZ	5310-00-121-8370	32195	306799	WASHER, LOCK	EA	2
6	3	PAOZZ	5330-01-009-8870	80256	325092	GASKET PART OF KIT P/N 392061	EA	1
6	4	PAFZZ	5305-01-072-3035	80256	303686	SCREW.....	EA	1
6	5	PAFZZ	5340-01-072-3042	80256	318974	FASTENER	EA	1
6		XDFZZ		80256	322828	ROD, KNOB TO LEVER	EA	1
6	7	PAOFF		80256	392291	CARBURETOR ASSY.....	EA	1
6	8	PAFZZ	5305-00-127-2399	80256	307175	.SCREW, MACHINE	EA	4
6	9	PAFZZ	5305-00-121-8240	80256	307832	.PLUG, SCREW	EA	1
6	10	PAFZZ	5310-00-001-9029	32195	303630	.WASHER, FLAT PART OF KIT P/N 39206 PART OF KIT PIN 392061	EA	1
6	11	XDFZZ		80256	322907	.PLUG, ORIFICE, HIGH	EA	1
6	12	XAFZZ		80256	387590	.CHAMBER ASSY, FLOAT	EA	1
6	13	PAFZZ	5330-01-099-8871	80256	316332	.GASKET PART OF KIT P/N 392061	EA	1
6	14	KFFZZ		80256	302661	.PIN, FLOAT HINGE PART OF KIT P/N 392061	EA	1
6	15	KFFZZ		80256	382363	.FLOAT, ARM ASSY PART OF KIT P/N 392061	EA	1
6	16	KFFZZ		80256	678882	.VALVE & SEAT ASSY, PART OF KIT P/N 392061	EA	1
6	17	KFFZZ		80256	603145	..CLIP, FLOAT VALVE PART OF KIT P/N 392061	EA	1
6	18	XAFZZ		80256	678278	..VALVE ASSY, FLOAT	EA	1
6	19	XAFZZ		80256	302612	..SEAT FLOAT VALVE.....	EA	1
6	20	KFFZZ		80256	301996	..WASHER, FLOAT VALVE SEAT PART OF KIT P/N PART OF KIT P/N 392061	EA	1
6	21	PAFZZ	5330-00-274-7762	32195	316331	.GASKET PART OF KIT P/N 39206 PART OF KIT P/N 392061	EA	1
6	22	PAOZZ	5315-00-470-5982	21119	303261	.PIN, DRIVE, SHAFT	EA	2
6	23	PAFZZ	5360-01-100-0193	80256	313357	.SPRING	EA	1
6	24	KFFZZ		80256	313973	.RETAINER PART OF KIT P/N 392061 ...	EA	1
6	25	PAFZZ	5310-00-121-8379	32195	307596	.WASHER, FLAT	EA	1
6	26	PAFZZ	2805-00-400-2379	80256	313329	.RETAINER, LINK, CARBU	EA	1
6	27	XDFZZ		80256	378984	.ARM & SCREW ASSY.....	EA	1
6	28	PAFZZ	5305-00-470-8781	32195	308893	..SCREW.....	EA	1
6	29	XAFZZ		80256	309239	..ARM	EA	1
6	30	PAFZZ	5305-01-110-8531	80256	311516	.SCREW, PAN HEAD	EA	1
6	31	PAFZZ		80256	314906	.CLIP, CHOKE SHAFT	EA	1
6	32	PAFZZ	2910-01-138-6686	80256	387701	.VALVE ASSY, NEEDLE.....	EA	1
6	33	PAFZZ	2910-01-133-3603	80256	315232	.RETAINER, NEEDLE VA	EA	1
6	34	KFFZZ		80256	307542	.PLUG, CORE PART OF KIT P/N 39201 .	EA	2
6	35	KFFZZ		80256	202310	.PLUG, CORE PART OF KIT P/N 39201 .	EA	1
6	36	PAFZZ	2990-00-482-1534	32195	304201	.BALL, LEAD	EA	1
6	37	XAFZZ		80256	327585	..BODY, CARBURETOR	EA	1
6		PAFZZ	5340-01-135-3968	80256	392061	KIT, CARBURETOR	EA	1

CONTINUED

(1) ILLUSTRATION		(2)	(3)	(4)	(5)	(6)	(7)	(8)
(a) FIG NO.	(b) ITEM NO.	SMR CODE	FEDERAL STOCK NUMBER	FSCM	PART NUMBER	DESCRIPTION <i>USABLE ON CODE</i>	U/M	QTY INC IN UNIT
						CONTINUED		
6	3					GASKET	EA	1
6	10					WASHER, FLAT	EA	1
6	13					GASKET	EA	1
6	14					PIN, FLOAT HINGE	EA	1
6	15					FLOAT & ARM ASSY	EA	1
6	16					VALVE & SEAT ASSY	EA	1
6	17					CLIP, FLOAT VALVE	EA	1
6	20					WASHER, FLOAT VALVE	EA	1
6	21					GASKET	EA	1
6	24					RETAINER	EA	1
6	34					PLUG, CORE	EA	2
6	35					PLUG, CORE	EA	1

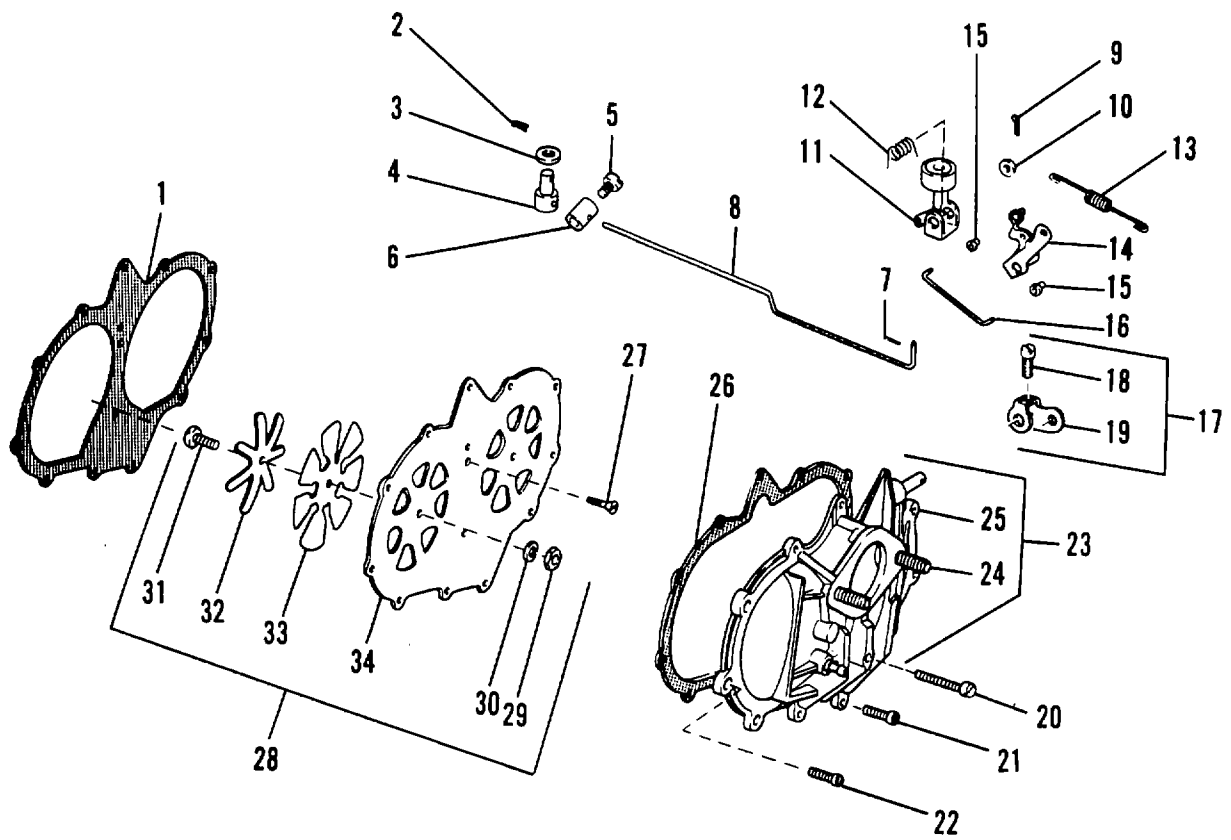


Figure 7. Intake Manifold

(1) ILLUSTRATION		(2)	(3)	(4)	(5)	(6)	(7)	(8)
(a) FIG NO.	(b) ITEM NO.	SMR CODE	FEDERAL STOCK NUMBER	FSCM	PART NUMBER	DESCRIPTION <i>USABLE ON CODE</i>	U/M	QTY INC IN UNIT
						GROUP 07 INTAKE MANIFOLD		
7	1	PAFZZ	5330-00-059-5412	80256	311365	GASKET PART OF KIT PIN 390700	EA	1
7	2	PAFZZ	5315-00-001-9027	80256	303049	PIN, COTTER	EA	1
7	3	PAFZZ	5310-00-118-5052	32195	551953	WASHER, FLAT	EA	1
7	4	PAFZZ	5315-00-369-8400	80256	304226	PIN, PIVOT	EA	1
7	5	PAFZZ	5305-00-121-8117	32195	304221	SETSCREW	EA	1
7	6	PAFZZ	3040-00-115-2555	32195	304222	COLLAR, THROTTLE SHA	EA	1
7	7	PAFZZ	5315-00-255-1001	32195	307565	.PIN, STRAIGHT HEADLE	EA	2
7	8	XDFZZ		80256	307824	ROD, THROTTLE CONTR.....	EA	1
7	9	PAFZZ	5315-00-409-2979	32195	305650	PIN, COTTER	EA	1
7	10	PAFZZ	5310-00-121-8328	32195	301827	.WASHER, FLAT	EA	1
7	11	XDFZZ		80256	376477	FOLLOWER, CAM	EA	1
7	12	PAFZZ		80256	318310	SPRING, CAM FOLLOWE	EA	1
7	13	PAFZZ	5360-00-810-4037	32195	307408	.SPRING, HELICAL, EXTE	EA	1
7	14	XDFZZ		80256	378985	LEVER, THROTTLE	EA	1
7	15	PAFZZ	2910-00-131-1363	32195	204701	.RETAINER, LINK	EA	2
7	16	XDFZZ		80256	309241	LINK, LEVER TO FOLL	EA	1
7	17	XDFZZ		80256	378984	ARM & SCREW ASSY	EA	1
7	18	PAFZZ	5305-000-4708781	32195	308893	.SCREW	EA	1
7	19	XAFZZ		80256	309239	.ARM	EA	1
7	20	XDFZZ	5305-00-181-0808	32195	307878	SCREW, MACHINE	EA	1
7	21	PAFZZ	5305-00-001-9034	80256	311367	SCREW, PAN.....	EA	2
7	22	PAFZZ	5305-00-145-7019		AN503-10-12	SCREW, MACHINE	EA	9
				88044	PC503-10-12			
7	23	PAFZZ	2990-01-133-9913	80256	388573	MANIFOLD ASSY, INTA.....	EA	1
7	24	PAFZZ	5307-00-119-0480	21119	3082122	.STUD, PLAIN	EA	2
7	25	XAFZZ		80256	388573	.MANIFOLD, INTAKE	EA	1
7	26	PAFZZ	5330-00-544-6419	80256	311364	GASKET PART OF KIT PIN 390700	EA	1
7	27	PAFZZ	5305-00-954-3487	96906	MS35190-271	SCREW, MACHINE	EA	1
7	28	PAFFF	2805-00-077-1708	80256	380243	PLATE ASSY, LEAF	EA	1
7	29	PAFZZ	5305-00-470-9832	32195	306556	.NUT, PLAIN.HEXAGON	EA	2
7	30	PAFZZ	5310-00-405-5458	32195	336546	.WASHER, LOCK	EA	2
7	31	PAFZZ	5305-00-177-5776	32195	301858	.SCREW, MACHINE	EA	2
7	32	PAFZZ	2910-00-810-4023	32195	304709	.STOP, LEAF, FUEL, MANI	EA	2
7	33	PAFZZ		80256	308938	.LEAF	EA	2
7	34	PAFZZ	2910-00-815-4027	32195	311363	.PLATE, MANIFOLD.....	EA	1

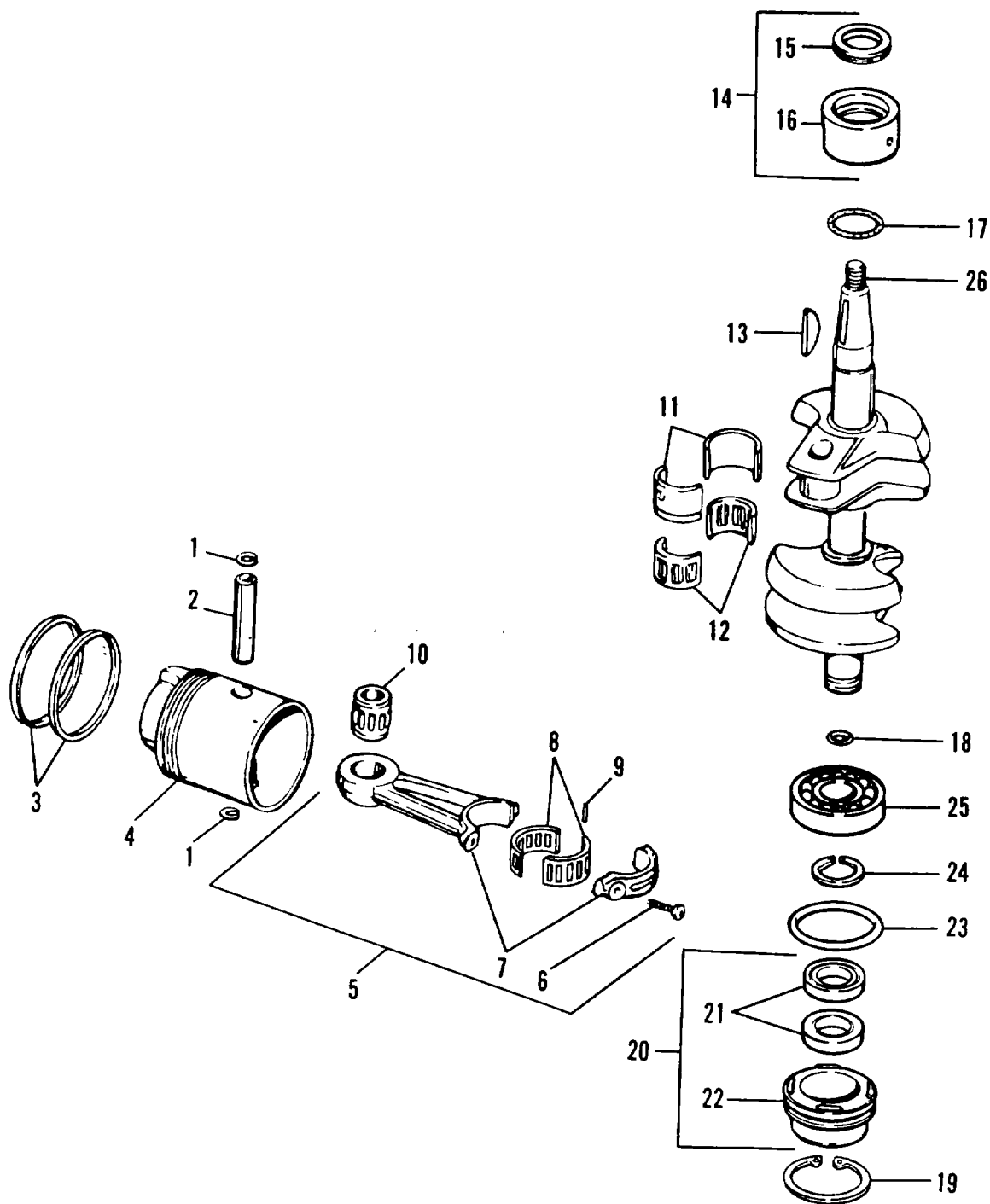


Figure 8. Crankshaft and Piston

(1) ILLUSTRATION		(2)	(3)	(4)	(5)	(6)	(7)	(8)
(a) FIG NO.	(b) ITEM NO.	SMR CODE	FEDERAL STOCK NUMBER	FSCM	PART NUMBER	DESCRIPTION <i>USABLE ON CODE</i>	U/M	QTY INC IN UNIT
						GROUP 08 CRANKSHAFT AND PISTON		
8	1	PAFZZ	5365-00-687-3379	96906	MS16625-1062	RING.RETAINING	EA	4
8	2	PAFZZ	5315-01-109-9680	21119	320663	PIN	EA	2
8	3	PAFZZ	2105-01-119-5690	80256	388906	RING SET, STD	EA	2
8	3	PAFZZ		80256	388907	RING SET, .030 O.S	EA	2
8	4	PAFZZ	4310-01-078-6296	80256	384692	PISTON STANDARD	EA	2
8	4	PAFZZ	4310-01-078-6298	80256	384715	PISTON PIN	EA	2
8	5	PAFZZ	2805-00-078-2683	80256	378275	ROD ASSY, CONNECTIN.	EA	2
8	6	PAFZZ	5306-00-077-1768	32195	308186	.BOLT, EXTERNALLY REL.....	EA	2
8	7	XAFZZ		80256	308301	.ROD CONNECTING	EA	1
8	8	PAFZZ		30256	388188	RETAINER SET	EA	2
8	9	PAFZZ		80256	387142	NEEDLE SET, ROD.....	EA	2
8	10	PAFZZ		80256	378251	BEARING, WRIST PIN	EA	2
8	11	PAFZZ	2805-00-102-9835	32195	310433	SLEEVE, SPLIT	EA	1
8	12	PAFZZ	2805-00-102-9836	80256	378252	BEARING, RETAINER & NEEDLES, CENTER	EA	1
8	13	PAFZZ	5315-00-077-1739	32195	307480	KEY, WOODRUFF	EA	1
8	14	PAFZZ	2090-01-109-9681	21119	382596	BEARING AND SEAL	EA	1
8	15	PAFZZ	5330-01-091-0857	21119	321895	.SEAL	EA	1
8	16	PAFZZ		80256	382315	.BEARING, ROLLER	EA	1
8	17	PAFZZ	5330-00-090-4799	80256	313754	PACKING, PREFORMED	EA	1
8	18	PAFZZ	5330-01-115-7057	80256	319344	PACKING, PREFORMED	EA	1
8	19	PAFZZ	5365-01-123-5914	80256	319345	RING, RETAINING	EA	1
8	20	PAFZZ	2805-01-091-0858	80256	386162	HELD ASSY CRANKCAS	EA	1
8	21	PAFZZ	5330-01-091-0856	21119	321668	.SEAL.....	EA	2
8	22	XAFZZ		80256	319040	HEAD, CRANKCASE	EA	1
8	23	PAFZZ	5330-00-090-4772	32195	308876	PACKING, PREFORMED	EA	1
8	24	PAFZZ	5365-00-027-0900	32195	305132	RING, RETAINING	EA	1
8	25	PAFZZ	3110-00-245-3682	32195	374258	BEARING, BALL, ANNULA	EA	1
8	26	PAFZZ	2805-01-119-5691	80256	386075	CRANKSHAFT	EA	1

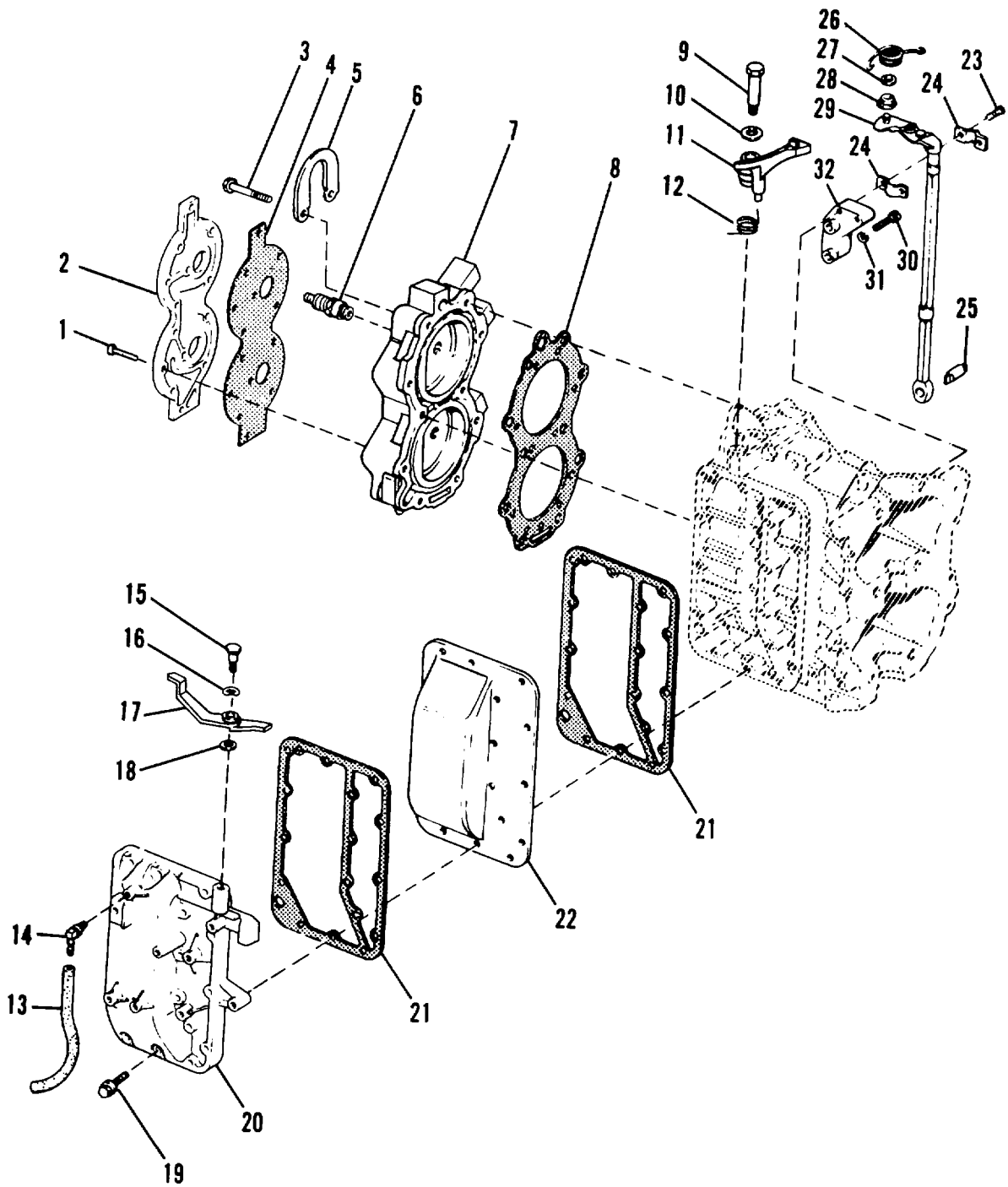


Figure 9. Cylinder and Crankcase (Sheet 1 of 2)

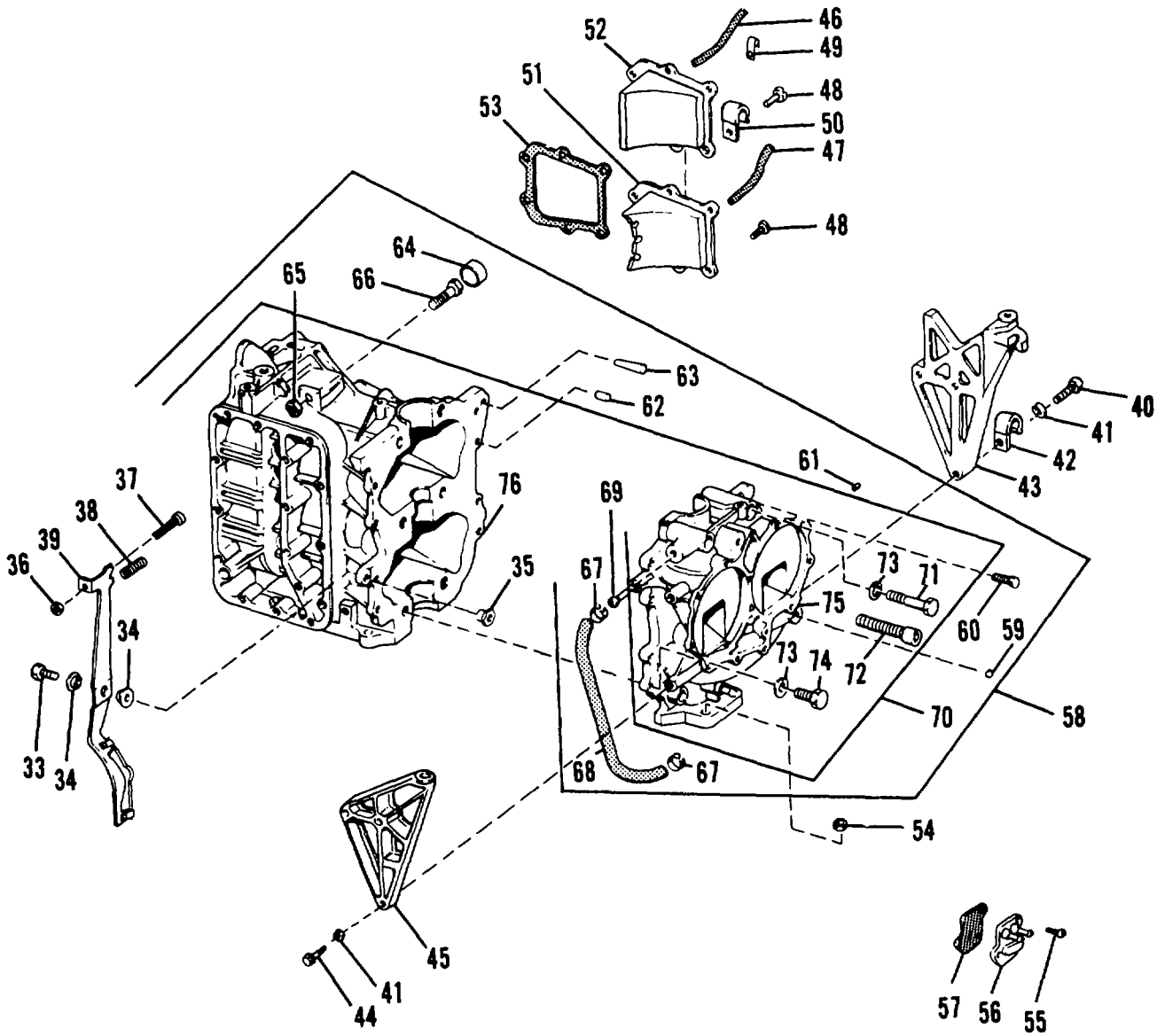


Figure 9. Cylinder and Crankcase (Sheet 2 of 2)

(1) ILLUSTRATION		(2)	(3)	(4)	(5)	(6)	(7)	(8)
(a) FIG NO.	(b) ITEM NO.	SMR CODE	FEDERAL STOCK NUMBER	FSCM	PART NUMBER	DESCRIPTION <i>USABLE ON CODE</i>	U/M	QTY INC IN UNIT
						GROUP 09 CYLINDER AND CRANKCASE		
9	1	PAFZZ	5305-00-068-0502	32195	330646	SCREW, CAP, HEXAGON H	EA	14
9	2	PAFZZ	2990-01-133-4103	80256	323005	COVER, CYLINDER HEA	EA	1
9	3	PAFZZ	5306-00-795-6951	80256	305027	BOLT, MACHINE	EA	10
9	4	PAFZZ	5330-01-115-7056	80256	318962	GASKET, COVER PART OF KIT P/N 390700	EA	1
9	5	XOFZZ		80256	312050	BRACKET, LIFT	EA	1
9	6	PAOZZ	2920-01-133-7957	11583	RL82	PLUG, SPARK	EA	2
9	7	PAFZZ	2805-01-119-5692	80256	318961	HEAD, CYLINDER.....	EA	1
9	8	PAFZZ	5330-00-078-2668	32195	317069	GASKET PART OF KIT P/N 390700	EA	1
9	9	PAFZZ	5305-01-078-6400	80256	321995	SCREW, SHOULDER	EA	
9	10	PAFZZ	5310-01-078-6163	80256	317655	WASHER	EA	1
9	11	PAFZZ	5340-01-078-6281	80256	311657	LEVER LOCKOUT	EA	1
9	12	PAFZZ	5360-01-078-6280	80256	315763	SPRING	EA	1
9	13	MOOZZ		80256	322999	HOSE, OVERBOARD IND.....	EA	4
9	14	PAOZZ	4730-01-110-8473	32195	321886	ELEC	EA	1
9	15	AFZZ	5305-01-110-8476	32195	322781	SCREW.....	EA	1
9	16	PAFZZ	5310-01-134-2051	80256	309020	WASHER, BOW	EA	1
9	17	PAFZZ	3040-01-105-4351	80256	317717	LEVER	EA	1
9	18	PAFZZ	5310-00-123-2610	32195	304051	WASHER, FLAT.....	EA	1
9	19	PAFZZ	5305-00-225-3842	96906	MS93728-9	SCREW, CAP, HEXAGON H	EA	16
9	20	PBFZZ	2990-01-133-7993	80256	322995	COVER, EXHAUST, OUT	EA	1
9	21	PAFZZ	5330-00-057-6911	80256	324762	GASKET PART OF KIT P/N 390700	EA	2
9	22	PBFZZ	2805-00-077-1714	80256	304761	COVER, EXAUST, INN	EA	1
9	23	PAFZZ	5305-00-281-3145	32195	332948	SCREW, ASSEMBLED WAS	EA	2
9	24	XDFZZ		80256	305609	CLAMP, BEARING	EA	2
9	25	PAFZZ	5315-00-126-3640	32195	304155	PIN, SHOULDER, HEADLE	EA	1
9	26	PAFZZ	5360-01-123-5915	80256	319795	SPRING, CONTROL LEV	EA	1
9	27	PAFZZ	5365-00-124-1205	80256	305831	SHIM	EA	1
9	28	PAFZZ	5330-00-369-8413	80256	307841	SLEEVE	EA	1
9	29	PBFZZ	2990-01-115-6984	80256	366492	LEVER, CONTROL.....	EA	1
9	30	PAFZZ	5305-01-133-9196	80256	309905	SCREW, WASHER, FEX	EA	2
9	31	PAFZZ	5310-00-987-0386	80256	332376	WASHER, LOCK	EA	2
9	32	XDFZZ		80256	304941	BRACKET	EA	1
9	33	PAFZZ	5305-00-124-1190	32195	306409	SCREW, CAP, HEXAGON H	EA	1
9	34	PAFZZ	3120-01-119-4442	80256	325542	BUSHING	EA	2
9	35	PAFZZ	5310-01-110-8437	80256	321528	NUT, SHIFTER SCRE	EA	1
9	36	PAFZZ	5310-00-121-8288	80256	304753	NUT, HEX	EA	1
9	37	PAFZZ	5305-01-134-5528	80256	318491	SCREW, PAN HEAD	EA	1
9	38	PAFZZ	5360-01-123-5919	80256	318462	SPRIKG, SHIFTER LOC	EA	1
9	39	PBFZZ	2990-01-082-2496	80256	335825	LOCK, SHIFTER	EA	1
9	40	PAFZZ	5305-00-131-1364	32195	307471	SCREW	EA	3

(1) ILLUSTRATION		(2)	(3)	(4)	(5)	(6)	(7)	(8)
(a) FIG NO.	(b) ITEM NO.	SMR CODE	FEDERAL STOCK NUMBER	FSCM	PART NUMBER	DESCRIPTION USABLE ON CODE	U/M	QTY INC IN UNIT
9	41	PAFZZ	5310-00-176-6433	32195	306396	WASHER, LOCK	EA	6
9	42	PAFZZ	5340-01-372-3038	80256	310441	CLAMP	EA	1
9	43	PBFZZ	2805-00-077-1769	32195	305077	BRACKET, PORT	EA	1
9	44	PAFZZ	5305-00-131-1365	32195	308077	SCREW HEAD	EA	3
9	45	PBFZZ	2805-00-077-1715	80256	305078	BRACKET, STARBOARD	EA	1
9	46	MOOZZ		80256	326449	HOSE	IN	1
9	47	MOOZZ		80256	326449-2	HOSE FABRICATED FROM 4 9 IN. P/N 326449	IN	1
9	48	PAFZZ	5305-00-482-1532	32195	306487	SCREW	EA	12
9	49	PAOZZ	5340-01-134-0070	75272	C0V0509C	CLAMP, UPPER BY-PAS	EA	1
9	50	PAFZZ		80256	310493	CLAMP, IGNITION COI	EA	1
9	51	PAFZZ	2990-01-133-7994	80256	386364	COVER, BY-PAS, LOW	EA	1
9	52	PAFZZ	2805-01-072-3071	80256	385107	COVER AND NIPPLE	EA	1
9	53	PAFZZ	5330-00-057-6912	90256	304784	GASKET PART OF KIT P/N 390700	EA	2
9	54	PAFZZ	5310-01-109-9679	21119	319884	NUT	EA	2
3	55	PAFZZ	5305-00-150-4841	80256	397466	SCREW, MACHINE	EA	2
9	56	PAFZZ	4810-01-081-9329	89256	385109	VALVE NIPPLE	EA	1
9	57	PAFZZ	5333-01-327-2872	32195	317254	GASKET PART OF KIT P/N 390700	EA	1
9	58	PAFFF	2805-01-119-3693	80256	390423	CYLINDER AND CRANKC	EA	1
9	59	PAFZZ	5340-00-178-3881	80256	300788	.PLUG, EXPANSION	EA	1
9	60	PAFZZ	5305-00-068-0502	32195	300646	.SCREW, CAP, HEXAGON H	EA	8
9	61	PAFZZ	2805-00-236-9412	32195	307587	.PLUG	EA	4
9	62	PAFZZ	5315-00-829-0227	32195	304178	.PIN, SHOULDER, HEADLE	EA	2
9	63	PAFZZ	5315-00-128-6651	32195	300402	.PIN, TAPER	EA	2
9	64	PAFZZ	5340-01-134-0071	80256	314416	.BUMPER, ARMATURE PL	EA	1
9	65	PAFZZ	5310-01-013-6871	80256	313022	NUT, ARMATURE PLATE STOP SCREW	EA	1
9	66	PAFZZ	5305-01-134-0072	80256	319354	.SCREW, ARMATURE PLA.	EA	1
9	67	PAOZZ	4730-90-374-2045	80256	302647	.CLAMP, HOSE	EA	2
9	68	MOOZZ		80256	321890	.HOSE	IN	1
9	69	PAOZZ	4730-00-400-2262	80256	303423	.NIPPLE, HOSE	EA	2
9	70	XAFZZ		80256	390422	.CYLINDER AND CRANK	EA	1
9	71	PAFZZ	5305-00-001-9023	32195	301431	..SCREW	EA	2
9	72	PAFZZ	5306-00-206-1372	32195	302579	..BOLT, INTERNAL WRENC	EA	2
9	73	PAFZZ	5310-00-405-5456	32195	300343	..WASHER, ROUND	EA	4
9	74	PAFZZ	5305-00-001-9026	32195	302600	..SCREW	EA	2
9	75	XAFZZ		80256	318827	..CRANKCASE	EA	1
9	76	XAFZZ		80256	390421	..CYLINDER AND SLEEVE ASSY	EA	1
9		PAFZZ	5330-01-133-3768	80256	390700	..GASKET SET, POWERHE	EA	1
5	2					GASKET	EA	1
7	1					GASKET	EA	1
7	26					GASKET	EA	1

CONTINUED

(1) ILLUSTRATION		(2)	(3)	(4)	(5)	(6)	(7)	(8)
(a) FIG NO.	(b) ITEM NO.	SMR CODE	FEDERAL STOCK NUMBER	FSCM	PART NUMBER	DESCRIPTION <i>USABLE ON CODE</i>	U/M	QTY INC IN UNIT
						CONTINUED		
9	4					GASKET, COVER	EA	1
9	8					GASKET	EA	1
9	21					GASKET	EA	2
9	53					GASKET	EA	2
9	57					GASKET	EA	1
10	5					GASKET	EA	2

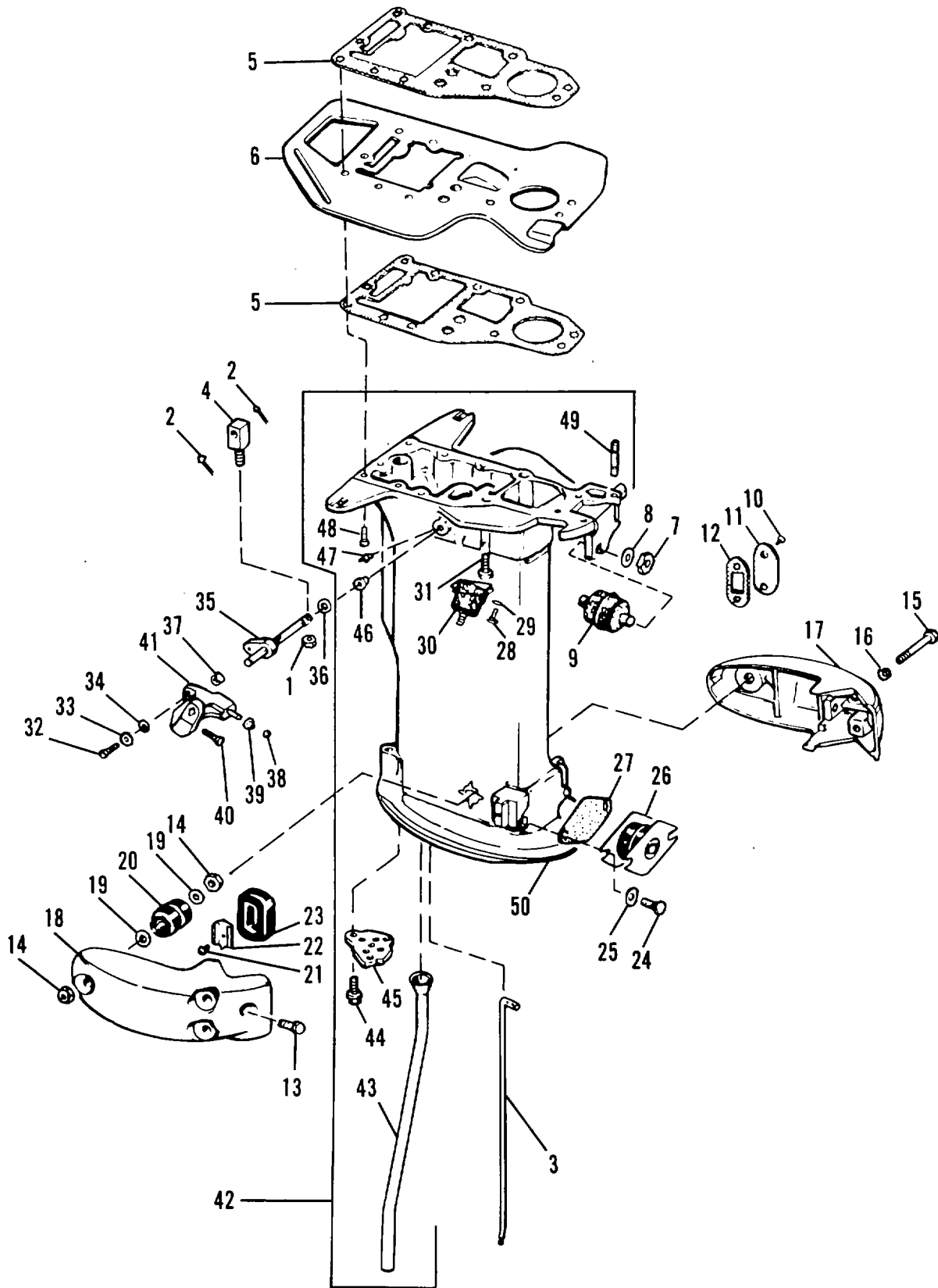


Figure 10. Exhaust Housing (Sheet 1 of 2)

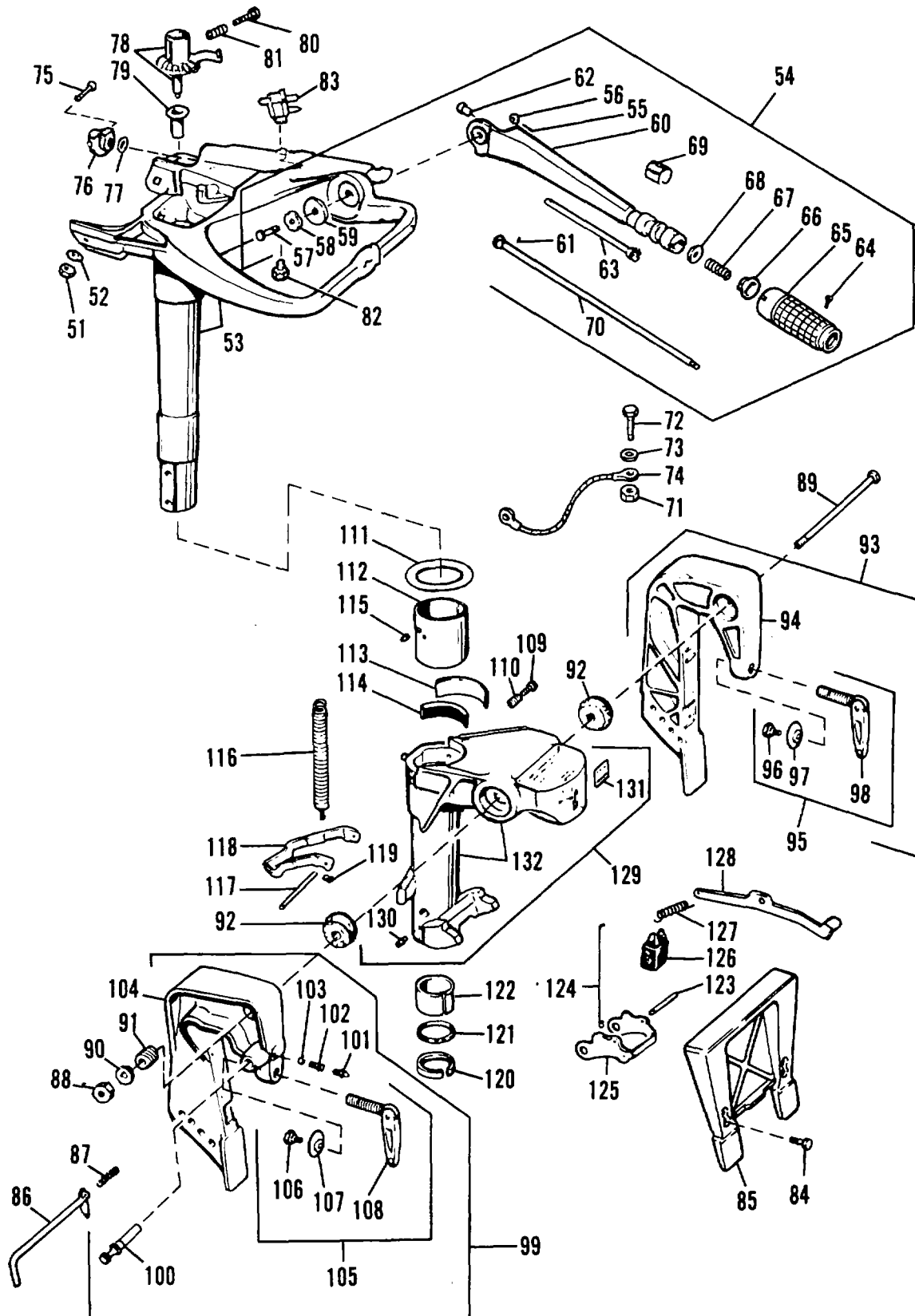


Figure 10. Exhaust Housing (Sheet 2 of 2)

(1) ILLUSTRATION		(2)	(3)	(4)	(5)	(6)	(7)	(8)
(a) FIG NO.	(b) ITEM NO.	SMR CODE	FEDERAL STOCK NUMBER	FSCM	PART NUMBER	DESCRIPTION <i>USABLE ON CODE</i>	U/M	QTY INC IN UNIT
						GROUP 10 EXHAUST HOUSING		
10	1	PAFZZ	5310-00-121-8288	80256	354753	NUT, HEX.....	EA	2
10	2	PAFZZ	5315-00-200-3586	96906	MS24665-1012	PIN, COTTER.....	EA	2
10	3	PAFZZ	3010-01-078-6292	80256	316714	SHIFTER LOCK	EA	1
10	4	PAFZZ	4730-01-078-6318	80256	316715	CONNECTOR	EA	1
10	5	PAFZZ	5330-00-059-5407	21119	319348	GASKET PART OF KIT P/N 390700	EA	2
10	6	XDFZZ		80256	322988	PLATE, POWERHEAD	EA	1
10	7	PAFZZ	5310-01-134-0073	80256	321861	NUT, HEX	EA	2
10	8	PAFZZ	5310-00-123-2609	80256	303913	WASHER, FLAT	EA	2
10	9	PAFZZ	5340-01-134-0168	76005	J6170-11	MOUNT, RUBBER, UPPE.....	EA	1
10	10	PAFZZ	5305-01-078-6165	80256	303587	SCREW.....	EA	2
10	11	XDFZZ		80256	303862	PLATE, EXHAUST HSG	EA	1
10	12	PAFZZ	5330-00-102-8473	32195	304023	GASKET.....	EA	1
10	13	PAFZZ	5305-01-078-6313	80256	339942	SCREW HEAD	EA	2
10	14	PAFZZ	5310-00-797-5800	32195	303890	NUT, PLAIN, CAP.....	EA	4
10	15	PAFZZ	5305-01-072-3036	80256	304452	SCREW	EA	2
10	16	PAFZZ	5310-00- 827-3014	80256	332865	WASHER.LOCK	EA	2
10	17	XDFZZ		80256	324446	HOUSING, LOWER MOUN	EA	1
10	18	XDFZZ		80256	304447	HOUSING, LOWER MOUN	EA	1
10	19	PAFZZ	5330-00-866-9652	32195	304168	GASKET.....	EA	4
10	20	PAFZZ		76005	J6168-19	MOUNT, RUBBER, LOWE	EA	2
10	21	PAFZZ	5305-01-078-6168	80256	304012	SCREW	EA	2
10	22	PAFZZ	2990-01-078-6288	80256	303561	RETAINER.....	EA	2
10	23	PAFZZ	5340-01-078-6377	80256	554334	BUMPER, RUBBER	EA	2
10	24	PAFZZ	5305-00-127-2383	32195	303888	SCREW	EA	2
10	25	PAFZZ	5310-00-492-60L9	32195	303886	WASHER, SPECIAL	EA	4
10	26	PAFZZ		76005	J6272-6	MOUNT, RUBBER, LOWE	EA	1
10	27	PAFZZ	5330-00-057-6910	80256	324169	GASKET, LOWER FRONT MOUNT	EA	1
10	28	PAFZZ	5305-00-121-8069	80256	336461	SCREW, MACHINE.....	EA	4
10	29	PAFZZ	5310-00-123-2608	32195	303887	WASHER, FLAT	EA	4
10	30	PAFZZ		76005	J6269-11	MOUNT, RUBBER, UPPE.....	EA	2
10	31	PAFZZ	5306-01-134-3245	80256	326697	SCREW, CAP, HEX HEA	EA	2
10	32	PAOZZ	5305-00-564-4392	80256	302510	SCREW, CAP, HEX HEA	EA	1
10	33	PAOZZ	5310-00-123-2610	32195	334051	WASHER, FLAT	EA	1
10	34	PAOZZ		80256	311734	WASHER, FLAT	EA	2
10	35	PAFZZ	2990-01-014-5417	80256	380501	LEVER	EA	1
10	36	PAFZZ	5330-00-291-2317	32195	303191	PACKING, PREFORMED	EA	1
10	37	PAOZZ	5365-01-134-0074	80256	318585	SPACER.....	EA	1
10	38	PAOZZ	5365-00-757-4315	32195	328776	RING, RETAINING	EA	1
10	39	PAOZZ	3120-00-764-7515	80256	311489	BUSHING, SLEEVE	EA	1
10	40	PAOZZ	5305-00-121-2988	80256	330258	SCREW, MACHINE	EA	1

(1) ILLUSTRATION		(2)	(3)	(4)	(5)	(6)	(7)	(8)
(a) FIG NO.	(b) ITEM NO.	SMR CODE	FEDERAL STOCK NUMBER	FSCM	PART NUMBER	DESCRIPTION <i>USABLE ON CODE</i>	U/M	QTY INC IN UNIT
10	41	XDOZZ		80256	385044	HANDLE, GEARSHIFT	EA	1
10	42	XDFZZ		80256	387535	HOUSING ASSY, EXHAU	EA	1
10	43	XDFZZ		80256	377060	.TUBE, WATER.....	EA	1
10	44	PAFZZ	5305-01-079-919	80256	311615	.SCREW	EA	3
10	45	XDFZZ		80256	319752	.COVER, EXHAUST HSG	EA	1
10	46	PAFZZ	3120-01-077-0417	80256	304791	.BUSHING.....	EA	1
10	47	PAOZZ	4730-00-126-8455	04895	55033-9	.FITTING, LUBRICATIO	EA	1
10	48	PAFZZ		80256	326696	.SCREW, EXH. TUBE TO CYLINDER	EA	7
10	49	PAFZZ	5307-00-176-0743	32195	334517	.STUD, PLAIN	EA	2
10	50	XAFZZ		80256	321374	.CASING, EXHAUST HOU.....	EA	1
10	51	PAFZZ	5311-00-658-3521	32195	303889	NUT, SPECIAL	EA	2
10	52	PAFZZ	5310-01-078-6166	80256	303884	WASHER	EA	2
10	53	PAFZZ	2805-01-119-5694	80256	387533	BRACKET, STEERING	EA	1
10	54	PAOZZ	2805-01-119-5695	80256	391275	HANDLE ASSY, STEERI	EA	1
10	55	PAOZZ	5315-01-074-9091	80256	302804	.PIN, COTTER	EA	1
10	56	PAOZZ	5310-00-262-5135	32195	332803	.NUT P	EA	1
10	57	PAOZZ	5305-00-126-7405	80256	302721	.SCREW.....	EA	1
10	58	PAOZZ	5310-00-733-2298	32195	302631	.WASHER, SPRING TENSI	EA	1
10	59	PAOZZ	3120-00-126-7406	32195	3021703	.THRUST WASHER	EA	1
10	60	PAFZZ	2990-00-121-5904	21119	318216	.HANDLE, OUTBOARD MOT.....	EA	1
10	61	PAFZZ	5315-00-126-7401	32195	332709	.GROOVE PIN	EA	1
10	62	PAFZZ	3120-01-110-8501	32195	325074	.BUSHING.....	EA	1
10	63	PAFZZ		80256	392039	.GEAR SHAFT	EA	1
10	64	PAFZZ	5305-00-563-4906	80256	310303	.SCREW	EA	1
10	65	PAFZZ	2805-01-127-9961	80256	390677	.GRIP SLEEVE ASSY.....	EA	1
10	66	PAFZZ	2005-00-587-2069	32195	303282	.FRICTION BLOCK	EA	1
10	67	PAFZZ	536000-664-3928	80256	311656	.SPRING, HELICAL, COMP.....	EA	1
10	68	PAFZZ	5310-00-587-0368	32195	303252	.WASHER, FLAT.....	EA	1
10	69	PAFZZ		80256	319212	.PLATE	EA	1
10	70	PAFZZ	3040-01-139-4520	80256	390681	.GEAR & SHAFT, LONG	EA	1
10	71	PAOZZ	5310-01-077-0420	80256	306342	NUT	EA	1
10	72	PAOZZ	5305-01-078-6169	80256	304077	SCREW	EA	1
10	73	PAOZZ	5310-00-001-9028	32195	303480	WASHER, LOCK	EA	1
10	74	PAOZZ	2920-00-132-4676	32195	376349	GROUND STRAP, IGNITI	EA	1
10	75	PAFZZ	5305-01-134-0075	80256	312491	SCREW, MACHINE, FIL.....	EA	1
10	76	PAFZZ	2805-00-s87-2073	80256	303142	PINION, THROTTLE CO	EA	1
10	77	PAFZZ	5310-00-987-0361	80256	303100	WASHER, FLAT	EA	1
10	78	PAFZZ	3020-01-078-6312	80256	309188	GEAR	EA	1
10	79	PAFZZ	3120-01-077-0412	80256	303854	BUSHING.....	EA	1
10	80	PAFZZ	2B05-00-736-0126	21119	304573	SCREW, HOLE STOP.....	EA	1

(1) ILLUSTRATION		(2)	(3)	(4)	(5)	(6)	(7)	(8)
(a) FIG NO.	(b) ITEM NO.	SMR CODE	FEDERAL STOCK NUMBER	FSCM	PART NUMBER	DESCRIPTION USABLE ON CODE	U/M	QTY INC IN UNIT
10	81	PAFZZ	5360-00-124-0612	32195	309247	SPRING, HELICAL, COMP.....	EA	1
10	82	PAOZZ	5305-01-003-8066	80256	309526	SCREW.....	EA	1
10	83	PAOZZ	2910-00-077-1689	32195	376154	CONNECTOR,FUEL.....	EA	1
10	84	PAOZZ	5305-01-134-0076	80256	307151	SCREW, CAP, HEX HEA.....	EA	4
10	85	PAOZZ		80256	321751	WEDGE, TRANSOM	EA	1
10	86	PAOZZ	2805-00-077-1124	32195	379485	ROD, THRUST, PISTON	EA	1
10	87	PAOZZ	5360-00-763-0754	32195	310377	SPRING, HELICAL, COMP	EA	1
10	88	PAOZZ	5310-00-118-5079	21119	335496	NUT, SELF-LOCKING HE.....	EA	1
10	89	PAOZZ	5306-00-118-5080	21119	305495	BOLT, SQUARE NECK	EA	1
10	90	PAOZZ	5310-00-001-9031	32195	306433	WASHER	EA	1
10	91	PAOZZ	5360-00-664-1360	32195	302051	SPRING, HELICAL, COMP	EA	1
10	92	PAOZZ	5330-00-353-1730	32195	302637	PACKING, PREFORMED	EA	2
10	93	PAOOO	2805-01-119-5696	80256	391941	BRACKET ASSY, PORT.....	EA	1
10	94	XOOOO		80256	314916	.BRACKET, PORT	EA	1
10	95	PAOOO		80256	391434	..CLAMPSCREW ASSY	EA	1
10	96	PAOZZ	5305-01-134-5662	80256	321923	..SCREW, SHOULDER.....	EA	1
10	97	PAOZZ	5310-00-922-5652	80256	310938	...PLATE, SWIVEL.....	EA	1
10	98	PAOZZ		80256	391433	...SCREW, CLAMP HAND	EA	1
10	99	PAOOO	2805-00-369-8442	32195	383460	CLAMP HOLDER STARBOARD	EA	1
10	100	PAOZZ	5315-00-176-6481	32195	337456	.PIN, GROOVED, HEADLES	EA	1
10	101	PAOZZ	1430-00-400-2264	32195	307457	.FITTING, LUBRICATION.....	EA	1
10	102	PAOZZ	5360-00-236-9390	80256	337455	.SPRING	EA	1
10	103	PAOZZ	2805-00-164-7526	32195	16084	.BALL, DETENT	EA	1
10	104	XAOOO		80256	383454	.BRACKET, STERN, STARBAORD	EA	1
10	105	PAOOO		80256	391434	..CLAMPSCREW ASSY	EA	1
10	106	PAOZZ	5305-01-134-5662	80256	321923	...SCREW, SHOULDER	EA	1
10	107	PAOZZ	5310-00-922-5652	80256	310938	...PLATE, SWIVEL.....	EA	1
10	108	PAOZZ		80256	391433	...SCREW, CLAMP HAND	EA	1
10	109	PAFZZ	5305-01-078-6173	80256	306468	SCREW	EA	1
10	110	PAFZZ	5360-00-763-7073	32195	551113	SPRING, HELICAL, COMP	EA	1
10	111	PAFZZ	2805-00-736-0123	80256	303867	WASHER THRUST.....	EA	1
10	112	PAFZZ	2805-00-736-0125	21119	303936	LINER SWIVEL BRACKE	EA	1
10	113	XDFZZ		80256	303928	PLATE, CO-PILOT	EA	1
10	114	PAFZZ	2805-00-736-0124	80256	303929	SPACER SWIVEL BRACK	EA	1
10	115	PAFZZ	5315-01-077-0410	80256	303696	PIN LINER.....	EA	1
10	116	PAFZZ	5360-01-014-9412	21119	303971	SPRING	EA	1
10	117	XDFZZ		80256	303955	ROD, REVERSE LOCK	EA	1
10	118	XDFZZ		80256	303954	LEVER, LOCKING, REV.....	EA	1
10	119	PAFZZ	5315-00-200-3586	96906	MS24665-1012	PIN, COTTER.....	EA	1
10	120	PAFZZ	5365-01-079-997	80256	309074	SPACER.....	EA	1

(1) ILLUSTRATION		(2)	(3)	(4)	(5)	(6)	(7)	(8)
(a) FIG NO.	(b) ITEM NO.	SMR CODE	FEDERAL STOCK NUMBER	FSCM	PART NUMBER	DESCRIPTION <i>USABLE ON CODE</i>	U/M	QTY INC IN UNIT
10	121	PAFZZ	5330-00-290-8759	32195	30258	PACKING, PREFORMED	EA	1
10	122	PAFZZ	2990-01-014-9413	80256	309075	LINER	EA	1
10	123	PAFZZ	2805-00-118-5029	80256	303956	SHAFT, REVERSE LOCK	EA	1
10	124	PAFZZ	2805-00-077-1723	32195	333957	LINK, REVERSE LOCK	EA	1
10	125	PAFZZ	4010-01-077-0413	80256	303953	LINK.....	EA	1
10	126	PAFZZ	5340-00-178-3878	32195	305365	UPPER, RUBBER.....	EA	1
10	127	PAFZZ	5360-00-763-7076	32195	306265	SPRING, HELICAL, TORS	EA	1
10	128	PAFZZ	2805-00-077-1720	32195	303863	ARM, LOCKING LEVER LEVER	EA	1
10	129	XAFZZ		80256	378935	BRACKET ASSY, SWIVE	EA	1
10	130	PAFZZ	4730-00-050-4203	04895	5010-9	.FITTING, LUBRICATO	EA	1
10	131	PAOZZ		80256	317595	.TRANSFER, TILT LOCK	EA	1
10	132	PAFFF	5340-01-077-0432	80256	378935	.BRACKET	EA	1

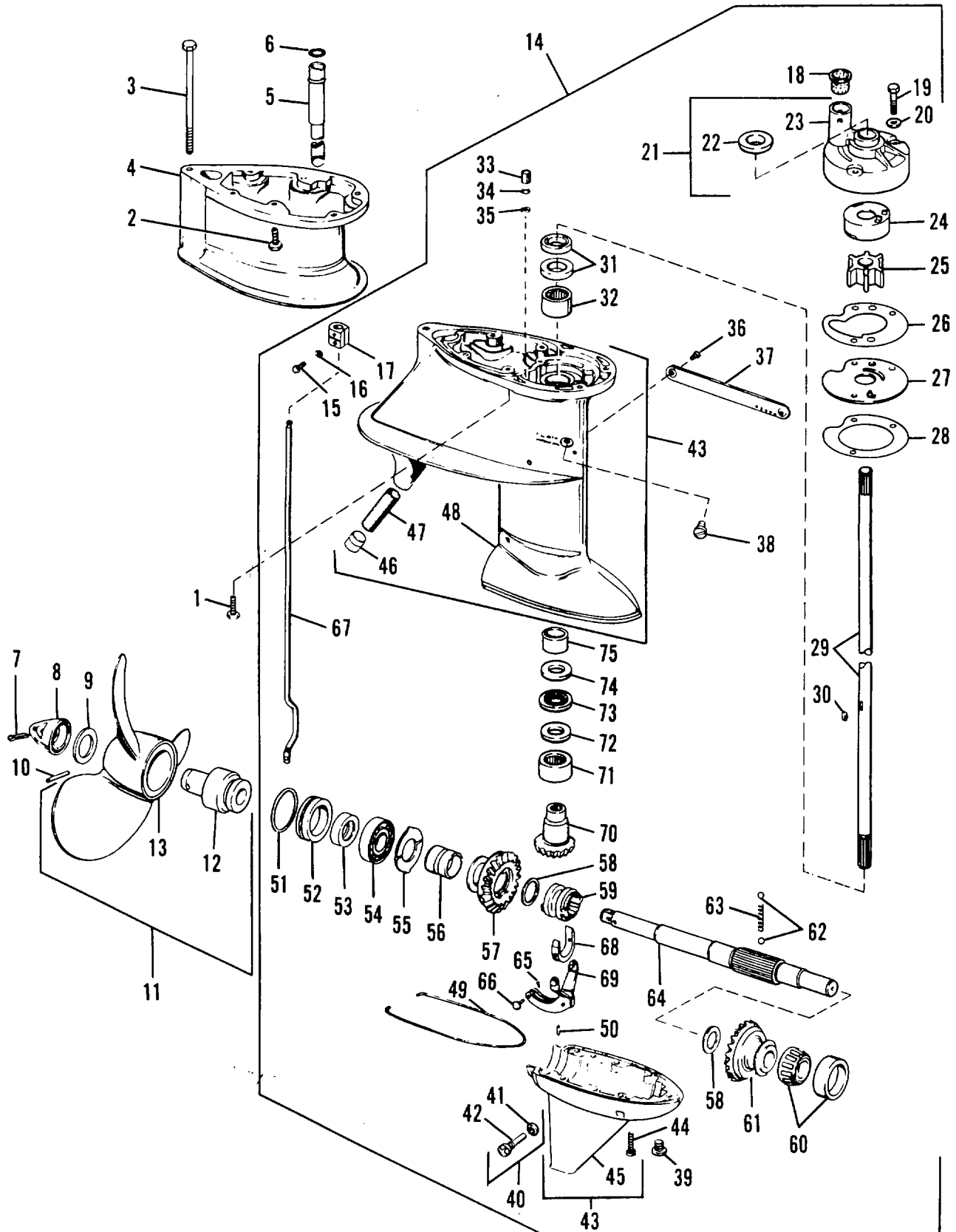


Figure 11. Gearcase

(1) ILLUSTRATION		(2)	(3)	(4)	(5)	(6)	(7)	(8)
(a) FIG NO.	(b) ITEM NO.	SMR CODE	FEDERAL STOCK NUMBER	FSCM	PART NUMBER	DESCRIPTION <i>USABLE ON CODE</i>	U/M	QTY INC IN UNIT
11	1	PAOZZ	5305-01-072-3057	80256	317967	GROUP 11 GEARCASE SCREW.....	EA	6
11	2	PAOZZ	5305-01-072-3057	80256	317967	SCREW.....	EA	6
11	3	PAOZZ	5305-01-134-3273	80256	317970	SCREW, CAP, HEX FEA.....	EA	1
11	4	XDOZZ		80256	317016	EXTENSION, GEARCASE.....	EA	1
11	5	PAOZZ	5333-00-484-1931	80256	3174	PACKING, PREFORMED	EA	1
11	6	XDOZZ		80256	304175	ADAPTER, WATER TUBE.....	EA	1
11	7	PAOZZ	5315-00-241-7332	76005	RS40-7	PIN, COTTER.....	EA	1
11	8	PAOZZ	2905-00-078-2993	32195	305294	RETAINER, ENGINE	EA	1
11	9	PAOZZ	3120-01-135-9535	80256	327748	WASHER, PROPELLER T	EA	1
11	10	PAOZZ	5315-00-504-8826	32195	3045T5	PIN, STRAIGHT, HEADLE	EA	1
11	11	PAOZZ	2805-01-126-9425	80256	392585	PROPELLER 11	EA	1
11	12	PAOZZ	5365-01-136-6200	80256	375789	.BUSHING ASSY, PROPE.....	EA	1
11	13	XAOZZ		80256	317746	.PROPELLER	EA	1
11	14	PBOFF		80256	392531	GEARCASE ASSY	EA	1
11	15	PAOZZ	5305-00-142-4171	32195	304024	.SCREW, MACHINE	EA	2
11	16	PAOZZ	5310-00-543-2740	80256	301551	.WASHER, LOCK	EA	2
11	17	XDOZZ		80256	303794	.CONNECTOR, SHIFT RO	EA	1
11	18	PAOZZ	5325-00-089-8977	32195	304026	.GROMMET, SPECIAL PART OF KIT P/N 391741	EA	1
11	19	KFOZZ		80256	325402	.SCREW, IMPELLER HOU PART OF KIT P/N 391741	EA	3
11	20	KFOZZ		80256	324956	.WASHER, INPELLER HO PART OF KIT P/N 391741	EA	3
11	21	KFOZZ		80256	390613	.HOUSING, IMPELLER PART OF KIT P/N 391741	EA	1
11	22	PAOZZ	5330-01-134-3295	80201	529610	..RETAINER, OIL PART OF KIT P/N 391741	EA	1
11	23	XAOZZ		80256	325404	..HOUSING, IMPELLER	EA	1
11	24	KFOZZ		80256	325397	CUP, IMPELLER PART OF KIT P/N 391741	EA	1
11	25	KFOZZ		80256	390286	.IMPELLER, PUMP PART OF KIT P/N 391741	EA	1
11	26	PAOZZ	5330-01-134-0218	80256	325399	.GASKET, IMPELLER HO PART OF KIT P/N 391741	EA	1
11	27	KFOZZ		80256	325398	.PLATE, IMPELLER HOU PART OF KIT P/N 391741	EA	1
11	28	PAOZZ	5330-01-134-0219	80256	325229	.GASKET, GEARCASE TO PLATE PART OF KIT P/N 391741.....	EA	1
11	29	PAOZZ	3040-01-139-5061	80256	386654	PART OF KIT P/N 391741	EA	1
11	30	KFOZZ		80256	327140	.DRIVESHAFT, LONG	EA	1
11	31	PAFZZ	5330-01-134-3295	80201	529610	.KEY, IMPELLER PART OF KIT P/N 391741	EA	1
11	32	PAFZZ		80657	BH1112	.RETAINER, OIL.....	EA	2
11	33	PAOZZ	2805-00-763-7093	32195	304765	.BEARING, DRIVESHAFT	EA	1
11	34	PAOZZ	5330-00-291-4856	32195	301877	.BUSHING, SHIFT ROD	EA	1
11	35	PAOZZ	5330-00-078-2645	32195	304764	.PACKING, PREFORMED	EA	1
11	36	PAOZZ	5305-00-987-0373	80256	302509	.GASKET.....	EA	1
11	37	XDOZZ		80256	302616	.SCREW, MACHINE OVAL HEAD	EA	2
11	38	PAOZZ	5365-00-893-9927	32195	307551	.COVER, WATER BY-PAS	EA	1
11	39	PAOZZ		80256	318544	.PLUG, MACHINE THREAD	EA	1
11						.SCREW, MAGNETIC DRA	EA	1

(1) ILLUSTRATION		(2)	(3)	(4)	(5)	(6)	(7)	(8)
(a) FIG NO.	(b) ITEM NO.	SMR CODE	FEDERAL STOCK NUMBER	FSCM	PART NUMBER	DESCRIPTION USABLE ON CODE	U/M	QTY INC IN UNIT
11	40	PAFZZ	2805-00-103-9324	80256	308376	.PIN ASSEMBLY, PIVOT	EA	1
11	41	PAFZZ	5330-00-121-8241	80256	337853	..SEAL, PIVOT PIN	EA	1
11	42	XAFZZ		80256	308376-2	..PIN, LEVER	EA	1
11	43	PBFZZ	3020-01-133-7410	80256	392529	.GEARCASE	EA	1
11	44	PAFZZ	5305-01-072-3059	80256	317969	..SCREW	EA	9
11	45	XAFZZ		80256	317334	..GEARCASE, LOWER	EA	1
11	46	PAOZZ	5315-00-141-1687	32195	300077	..PIN, STRAIGHT, HEADLE	EA	1
11	47	PAOZZ	2805-00-305-8703	32195	302521	..STRAINER ELEMENT, SE	EA	1
11	48	XAFZZ		80256	322584	..GEARCASE, UPPER.....	EA	1
11	49	HFFZZ		80256	309044	.SEAL, GEARCASE	EA	1
11	50	PAFZZ	2805-00-987-2095	32195	330611	.DOWEL	EA	1
11	51	PAFZZ		80256	302588	.PACKING, PREFORMED	EA	1
11	52	PAFZZ	2805-00-524-3012	32195	303050	.HOUSING, SEAL, DRIVE	EA	1
11	53	PAFZZ	5330-01-134-3296	80201	531191	.RETAINER, OIL, PROP	EA	1
11	54	PAFZZ	3110-01-072-3072	80256	385173	.BEARING, ALL	EA	1
11	55	PAFZZ	3120-00-353-1741	80256	302743	.BUSHING, SLEEVE.....	EA	1
11	57	PAFZZ	3020-00-078-2652	32195	312869	.GEAR, BEVEL.....	EA	1
11	58	PAFZZ		80657	JA50786	.WASHER, THRUST	EA	2
11	59	PAFZZ	2805-00-078-2690	80256	312866	.DOG CLUTCH	EA	1
11	60	PAFZZ	3110-01-072-3073	80256	385175	.BEARING ASSY.ROLLE	EA	1
11	61	PAFZZ	3020-00-078-2648	32195	381810	.GEAR, BEVEL	EA	1
11	62	PAFZZ	2805-00-764-7526	32195	16J084	.BALL, DETENT	EA	2
11	63	PAFZZ	5360-00-764-7527	80256	312870	.SPRING, HELICAL, COMP.....	EA	1
11	64	PAFZZ	2010-01-133-7995	80256	387238	.SHAFT, PROPELLER	EA	1
11	65	PAFZZ	5315-00-200-3586	96906	MS24665-1012	.PIN, COTTER	EA	1
11	66	PAFZZ	5315-00-251-9344	32195	302504	.PIN, STRAIGHT, ENDED	EA	1
11	67	PAFZZ	3040-00-400-2377	80256	305519	.ROD, SHIFT, LOWER	EA	1
11	68	PAFZZ	2805-00-078-2654	32195	335286	.CRADLE, SHIFTERCLUT	EA	1
11	69	PAFZZ	3040-00-078-2655	32195	305288	.LEVER, MANUAL CONTRO	EA	1
11	70	PAFZZ	3020-01-134-7181	80256	322605	.PINION.....	EA	1
11	71	PAFZZ	3110-00-078-2691	80657	AG28493	.BEARING, PINION, LO	EA	1
11	72	PAFZZ	5310-00-760-7866	80256	34796	.WASHER, FLAT	EA	1
11	73	PAFZZ		80657	NTC1427	.BEARING, THRUST, PI	EA	1
11	74	PAFZZ	5310-00-077-1729	32195	304795	.WASHER, FLAT	EA	1
11	75	PAFZZ	3120-00-764-7522	32195	376856	.BEARING, SLEEVE.....	EA	1
11		PAOZZ	2930-01-133-7738	80256	391741	.KIT, WATER PUMP WIT	EA	1
11	18					GROMMET, SPECIAL	EA	1
11	19					SCREW, IMPELLER HOU	EA	3
11	20					WASHER, IMPELLER HO	EA	3
						CONTINUED		

(1) ILLUSTRATION		(2)	(3)	(4)	(5)	(6)	(7)	(8)
(a) FIG NO.	(b) ITEM NO.	SMR CODE	FEDERAL STOCK NUMBER	FSCM	PART NUMBER	DESCRIPTION <i>USABLE ON CODE</i>	U/M	QTY INC IN UNIT
						CONTINUED		
11	21					HOUSING, IMPELLER.....	EA	1
11	22					RETAINER, OIL.....	EA	1
11	24					CUP, IMPELLER	EA	1
11	25					IMPELLER, PUMP	EA	1
11	267					GASKET, IMPELLER HO.....	EA	1
11	27					PLATE. IMPELLER HOU	EA	1
11	28					GASKET, GEARCASE TO.....	EA	1
11	30					KEY, IMPELLER.....	EA	1

(1) ILLUSTRATION		(2)	(3)	(4)	(5)	(6)	(7)	(8)
(a) FIG NO.	(b) ITEM NO.	SMR CODE	FEDERAL STOCK NUMBER	FSCM	PART NUMBER	DESCRIPTION <i>USABLE ON CODE</i>	U/M	QTY INC IN UNIT
						GROUP 12 BULK MATERIALS		
BULK	PAOZZ		4720-00-125-3265	80256	303617	HOSE.....	FT	
BULK	PAOZZ		4710-00-922-2259	80256	305872	TUBING, NONMETLLIC	FT	
BULK	PAOZZ		4720-01-086-866	21119	319719	HOSE, NONMETALLIC	FT	
BULK	PAOZZ			80256	326449	HOSE.....	FT	
BULK	PAOZZ		4020-01-011-0665	21119	316705	CORD, FIBROUS	FT	
BULK	PAOZZ		2805-00-983-6698	32195	309044	SEAL, SHAFT.....	FT	

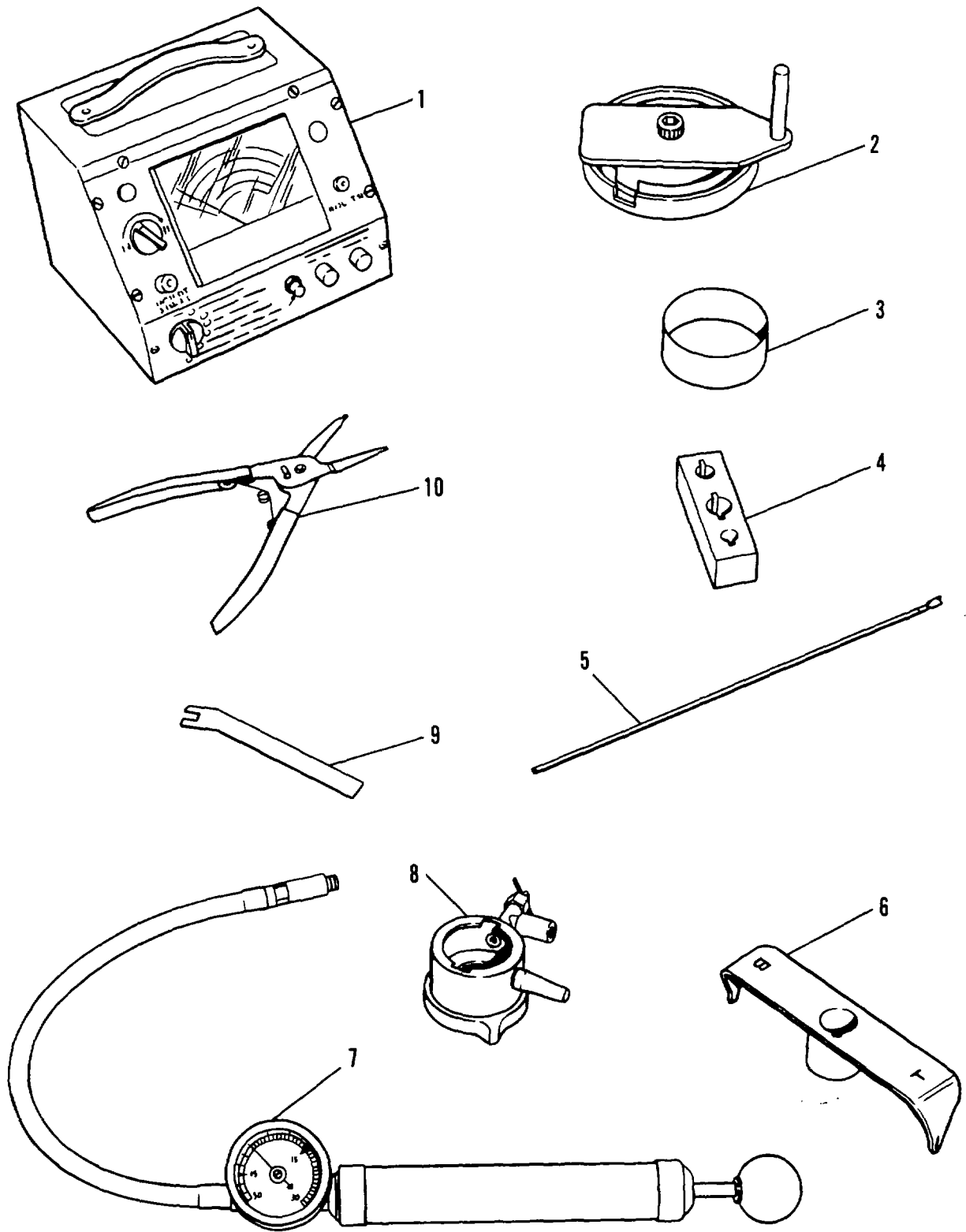


Figure 12. Tools

(1) ILLUSTRATION		(2)	(3)	(4)	(5)	(6)	(7)	(8)
(a) FIG NO.	(b) ITEM NO.	SMR CODE	FEDERAL STOCK NUMBER	FSCM	PART NUMBER	DESCRIPTION <i>USABLE ON CODE</i>	U/M	QTY INC IN UNIT
						GROUP 13 SPECIAL TOOLS		
12	1	PAOZZ		30217	AT101	TESTER, IGNITION AN	EA	
12	2	PAOZZ		80256	392093	WINDER, SPRING	EA	
12	3	PAFZZ		80256	326592	COMPRESSOR, PISTON.....	EA	
12	4	PAFZZ	2805-00-243-9537	32195	303605	BLOCKEPOWERHEADHOL	EA	
12	5	PAOZZ	2805-00-243-9534	32195	378774	THREADER ASSEMBLY	EA	
12	6	PAOZZ	2805-01-119-5697	80256	386635	FIXTURE, TIMING.....	EA	
12	7	PAOZZ	4910-01-132-9147	30217	S34	TESTER, PRESSURE.	EA	
12	8	PAOZZ	2910-01-133-3604	80256	38945	ADAPTER ASSY, GAS T.....	EA	
12	9	PAOZZ		80256	325043	WRENCH, HOSE CLAMP.....	EA	
12	10	PAFZZ		79136	NO. 5	PLIERS, RETAINING R	EA	

NATIONAL STOCK NUMBER AND PART NUMBER INDEX

FSCM	PART NUMBER	FIGURE NO.	ITEM NO.	FSCM	PART NUMBER	FIGURE NO.	ITEM NO.
80256	380243	7	28	80256	391434	10	105
80256	380501	10	35	80256	391434	10	95
80256	381016	4	4	80256	391741	11	
32195	381810	11	61	80256	391941	10	93
80256	382315	8	16	80256	392039	10	63
80256	382363	6	15	80256	392061	6	
21119	382596	8	14	80256	392093	12	2
80256	383454	10	104	80256	392291	6	7
32195	383460	10	99	80256	392529	11	43
80256	383719	4	37	80256	392531	11	14
32195	383720	4	39	80256	392572	1	1
80256	384692	8	4	80256	392584	3	47
80256	384715	8	4	80256	392585	11	11
80256	385044	10	41	80256	392587	4	1
80256	385107	9	52	80256	392588	4	29
80256	385109	9	56	04895	5010-9	10	130
80256	385173	11	54	80256	510193	3	31
80256	385175	11	60	80256	510194	3	26
80256	385565	2	6	32195	510208	3	40
80265	385566	2	26	80256	510397	3	37
80256	385690	2	22	80256	511071	3	17
32195	385781	5	3	80256	511195	3	36
80256	385825	9	39	80201	529610	11	22
80256	386075	8	26	80201	529610	11	31
80256	386162	8	20	80201	531191	11	53
80256	386364	9	51	04895	55033-9	10	47
80256	386492	9	29	32195	551113	10	110
80256	386635	12	6	32195	551953	7	3
80256	386654	11	29	80256	552331	4	26
32195	386940	4	30	32195	553164	4	40
80256	387142	8	9	32195	553166	4	38
80256	387238	11	64	32195	553766	1	8
80256	387533	10	53	21119	553770	1	43
80256	387535	10	42	80256	554334	10	23
80256	387590	6	12	80256	554355	1	16
80256	387701	6	32	80256	581010	3	28
80256	387923	2	24	80256	581027	3	52
80256	388188	8	8	80256	581202	3	38
80256	388573	7	23	80256	581207	3	27
80256	388573	7	25	80256	581320	3	23
80256	388574	1	39	21119	581419	3	39
32195	388742	5	11	80256	581567	3	29
80256	388906	8	3	80256	581786	3	51
80256	388907	8	3	80256	581838	3	11
80256	388938	4	25	80256	581839	3	18
80256	389742	4	28	80256	581840	3	10
80256	389945	12	8	80256	582067	3	41
80256	390286	11	25	80256	582293	3	4
80256	390421	9	76	80256	603145	6	17
80256	390422	9	70	00779	60614-2	3	15
80256	390423	9	58	00779	60614-2	3	19
80256	390613	11	21	77060	6288953	3	8
80256	390677	10	65	77060	6288953	3	14
80256	390681	10	70	77060	6288953	3	54
80256	390700	9		77060	6288953	3	20
80256	391275	10	54	80256	678278	6	18
80256	391433	10	108	80256	678882	6	16
80256	391433	10	98	80256	902413	1	18

NATIONAL STOCK NUMBER AND PART NUMBER INDEX

FSCM	PART NUMBER	FIGURE NO.	ITEM NO.	FSCM	PART NUMBER	FIGURE NO.	ITEM NO.
32195	314417	5	1	80256	321995	9	9
80256	314492	3	43	80256	322086	1	51
80256	314906	6	31	80256	322102	3	46
80256	314916	10	94	80256	322435	3	42
80256	315135	1	35	80256	322584	11	48
80256	315151	1	4	21119	322598	4	8
80256	315159	1	11	80256	322605	11	70
80256	315232	6	33	80256	322652	5	8
80256	315763	9	12	80256	322695	4	34
80256	316136	1	53	80256	322759	5	5
32195	316331	6	21	32195	322781	9	15
80256	316332	6	13	80256	322822	1	33
21119	316705	BULK		80256	322823	1	32
80256	316714	10	3	80256	322824	1	31
80256	316715	10	4	80256	322828	6	6
80256	317016	11	4	80256	322907	6	11
80256	317170	2	4	80256	322988	10	6
80256	317173	1	21	80256	322995	9	20
80256	317223	1	12	80256	322999	9	13
32195	317254	9	57	80256	323005	9	2
80256	317334	11	45	80256	323090	5	12
80256	317491	1	38	80256	323236	1	7
80256	317581	1	41	80256	323369	4	27
80256	317595	10	131	80256	323474	1	56
80256	317655	9	10	80256	323893	1	60
80256	317657	9	11	80256	324474	1	36
80256	317746	11	13	80256	324814	1	48
80256	317967	11	1	80256	324956	11	20
80256	317967	11	2	80256	325043	12	9
80256	317969	11	44	32195	325074	10	62
80256	317970	11	3	80256	325092	6	3
80256	317971	9	17	80256	325229	11	28
21119	318216	10	60	80256	325357	1	9
80256	318262	1	59	80256	325397	11	24
80256	318310	7	12	80256	325398	11	27
80256	318462	9	38	80256	325399	11	26
80256	318491	9	37	80256	325402	11	19
80256	318544	11	39	80256	325404	11	23
80256	318571	1	23	80256	325542	9	34
80256	318585	10	37	80256	325675	1	13
80256	318827	9	75	80256	325972	1	37
80256	318909	3	34	80256	326048	3	9
80256	318954	3	32	80256	326449	BULK	
80256	318961	9	7	80256	326449	9	46
80256	318962	9	4	80256	326449-2	9	47
80256	318974	6	5	80256	326592	12	3
80256	319040	8	22	80256	326696	10	48
80256	319080	2	21	80256	326697	10	31
80256	319212	10	69	80256	326948	1	14
80256	319344	8	18	80256	326954	1	15
80256	319345	8	19	80256	327140	11	30
21119	319348	10	5	80256	327398	2	18
80256	319354	9	66	80256	327585	6	37
80256	319389	1	57	80256	327733	1	19
80256	319473	3	44	80256	327735	1	20
80256	319485	1	22	80256	327736	1	24
21119	319719	BULK		80256	327748	11	9
80256	319729	5	14	80256	327751	10	85
80256	319739	5	9	80256	375789	11	12
80256	319752	10	45	80256	375836	2	23
80256	319795	9	26	32195	376154	10	83
21119	319884	9	54	32195	376156	4	31
80256	320022	2	25	32195	376349	1	26
32195	320107	5	13	32195	376349	10	74
80256	320288	3	16	80256	376477	7	11
80256	320417	4	36	32195	376856	11	75
21119	320663	8	2	80256	377060	10	43
80256	320732	1	17	80256	378251	8	10
80256	321356	1	42	80256	378252	8	12
80256	321374	10	50	80256	378275	8	5
80256	321376	1	45	32195	378774	12	5
80256	32128	9	35	80256	378935	10	129
21119	321668	8	21	80256	378935	10	132
80256	321861	10	7	80256	378984	6	27
80256	321885	1	50	80256	378984	7	17
32195	321886	9	14	80256	378985	7	14
80256	321890	9	68	21119	379067	2	10
21119	321895	8	15	32195	379258	8	25
80256	321923	10	106	32195	379485	10	86
80256	321923	10	96	21119	379638	3	6

NATIONAL STOCK NUMBER AND PART NUMBER INDEX

FSCM	PART NUMBER	FIGURE NO.	ITEM NO.	FSCM	PART NUMBER	FIGURE NO.	ITEM NO.
80256	304753	9	36	80256	308301	8	7
80256	304753	10	1	32195	308375	2	2
80256	304761	9	22	80256	308376	11	40
80256	304762	9	21	80256	308376-2	11	42
32195	304764	11	35	80256	308457	3	1
32195	304765	11	33	32195	308532	1	10
80256	304784	9	53	32195	308776	10	38
80256	304791	10	46	32195	308876	8	23
32195	304795	11	74	32195	308893	6	28
80256	304796	11	72	32195	308893	7	18
80256	304941	9	32	80256	308938	7	33
80256	305027	9	3	80256	309020	9	16
32195	305077	9	43	32195	309044	BULK	
80256	305078	9	45	80256	309044	11	49
32195	305132	8	24	80256	309074	10	120
80256	305230	3	45	80256	309075	10	122
32195	305243	4	12	80256	309188	10	78
32195	305286	11	68	80256	309239	6	29
32195	305288	11	69	80256	309239	7	19
32195	305294	11	8	80256	309241	7	16
32195	305365	10	126	32195	309247	10	81
21119	305495	10	89	80256	309513	2	15
21119	304596	10	88	80256	309514	2	12
80256	305519	11	67	32195	309515	2	13
80256	305609	9	24	32195	309516	2	14
32195	305650	7	9	80256	309526	10	82
80256	305821	4	16	80256	309646	3	48
80256	305831	9	27	80256	309905	9	30
32195	305859	4	7	80256	309942	10	13
21119	305863	4	3	80256	310303	10	64
80256	305871	4	35	32195	310377	10	87
80256	305872	BULK		32195	310433	8	11
80256	306236	1	54	80256	310439	5	10
32195	306265	10	127	80256	310441	9	42
32195	306284	2	8	80256	310493	3	50
80256	306342	10	71	80256	310493	9	50
32195	306396	9	41	80256	310523	3	13
32195	306409	9	33	80256	310523	3	22
80256	306422	6	1	32195	310572	3	7
32195	306433	10	90	32195	310572	3	12
80256	306461	10	28	32195	310572	3	21
80256	306468	10	109	32195	310572	3	53
32195	306487	9	48	32195	310845	4	18
32195	306488	3	49	32195	310849	4	19
32195	306546	7	30	80256	310938	10	107
32195	306556	7	29	80256	310938	10	97
32195	306799	6	2	32195	310984	4	24
80256	307019	3	30	80256	311020	1	25
80256	307029	1	34	32195	311363	7	84
32195	307069	9	8	80256	311364	7	6
80256	307151	10	84	80256	311365	7	1
21119	307163	2	16	80256	311367	7	21
80256	307175	6	8	32195	311375	1	44
32195	307408	7	13	80256	311489	10	39
80256	307455	10	102	80256	311516	6	30
32195	307456	10	100	80256	311563	2	1
32195	307457	10	101	80256	311615	10	44
80256	307466	9	55	80256	311734	10	34
32195	307471	9	40	80256	312050	9	5
32195	307480	8	13	32195	312190	4	22
80256	307542	6	34	32195	312191	4	20
32195	307551	11	38	32195	312192	4	23
32195	307565	7	7	32195	312193	4	21
32195	307587	9	61	80256	312299	1	2
32195	307596	6	25	80256	312491	10	75
80256	307824	7	8	80256	312495	1	29
80256	307832	6	9	21119	312675	5	6
80256	307841	9	28	80256	312677	5	4
80256	307853	11	41	32195	312679	5	7
32195	307856	4	6	80256	312866	11	59
80256	307857	4	9	32195	312869	11	57
32195	307858	4	10	80256	312870	11	63
80256	307860	4	14	80256	313022	9	65
21119	307861	4	13	80256	313329	6	26
21119	307862	4	15	80256	313357	6	23
32195	307878	7	20	80256	313754	8	17
80256	308072	3	2	80256	313779	3	5
32195	308077	9	44	80256	313973	6	24
32195	308081	4	11	80256	314200	3	35
32195	308186	8	6	80256	314416	9	6

NATIONAL STOCK NUMBER AND PART NUMBER INDEX

FSCM	PART NUMBER	FIGURE NO.	ITEM NO.	FSCM	PART NUMBER	FIGURE NO.	ITEM NO.
80657	AG28493	11	71	32195	302803	10	56
88044	AN503-10-12	4	2	80256	302804	10	55
88044	AN503-10-12	7	22	80256	302812	3	33
30217	AT101	12	1	21119	302822	7	24
80657	BH112	11	32	80256	302865	10	16
75272	COV0509C	9	49	32195	302948	9	23
80657	JA50786	11	58	80256	303049	7	2
76005	J6168-19	10	20	32195	303050	11	52
76005	J6170-11	10	9	80256	303107	10	77
76005	J6269-11	10	30	80256	303142	10	76
76005	J6272-6	10	26	32195	303191	10	36
84955	K674580-11	2	9	32195	303252	10	68
96906	MS16625-1062	8	1	21119	303261	6	22
96906	MS24665-1012	10	2	32195	303282	10	66
96906	MS24665-1012	10	119	80256	303398	1	30
96906	MS24665-1012	11	65	32195	303405	4	5
96906	MS35190-271	7	27	80256	303423	9	69
96906	MS90728-9	9	19	32195	303480	10	73
79136	NO. 5	12	10	80256	303587	10	10
80657	NTC1427	11	73	80256	303596	4	33
11583	RL82	9	6	32195	303598	4	32
76005	RS40-7	11	7	32195	303605	12	4
70903	ST5159	3	24	32195	303615	5	2
30217	S34	12	7	80256	303617	BULK	
80256	122147	1	5	32195	303630	6	10
32195	160084	10	103	80256	303686	6	4
32195	160084	11	62	32195	303690	11	56
80256	172806	3		80256	303696	10	115
77060	200179L/P	3	25	80256	303794	11	17
80256	202111	3	3	80256	303854	10	79
21119	202156	2	11	80256	303862	10	11
80256	202310	6	35	32195	303863	10	128
32195	202317	2	17	80256	303867	10	111
32195	204708	7	15	80256	303884	10	52
80256	204866	1	40	32195	303886	10	25
80256	204911	2	19	32195	303887	10	29
80256	204913	2	20	32195	303888	10	24
80256	208424	2	5	32195	303889	10	51
32195	300077	11	46	80256	303889	1	52
80256	300258	10	40	32195	303890	10	14
32195	300343	9	73	80256	303913	10	8
32195	300402	9	63	80256	303928	10	113
32195	300611	11	50	80256	303929	10	114
32195	300646	9	1	21119	303936	10	112
32195	300646	9	60	80256	303953	10	125
80256	300788	9	59	80256	303954	10	118
32195	301431	9	71	80256	303955	10	117
32195	301472	1	27	80256	303956	10	123
80256	301551	11	16	32195	303957	10	124
80256	301656	10	67	80256	303961	10	22
80256	301814	1	3	21119	303971	10	116
32195	301827	7	10	80256	304012	10	21
32195	301858	7	31	80256	304019	1	58
32195	301877	11	34	32195	304023	10	12
80256	301996	6	20	32195	304024	11	15
32195	302051	10	91	32195	304026	11	18
32195	302103	2	7	32195	304027	1	55
80256	302290	1	28	32195	304051	1	6
80256	302376	9	31	32195	304051	1	49
80256	302405	1	47	32195	304051	9	18
80256	302406	1	46	32195	304051	10	33
32195	302504	11	66	80256	304077	10	72
80256	302509	11	36	32195	304155	9	25
80256	302510	10	32	32195	304168	10	19
32195	302521	11	47	80256	304169	10	27
80256	302559	4	17	80256	304174	11	5
32195	302579	9	72	80256	304175	11	6
32195	302588	10	121	32195	304178	9	62
80256	302588	11	51	32195	304201	6	36
32195	302600	9	74	32195	304221	7	5
80256	302616	11	37	32195	304222	7	6
32195	302631	10	58	80256	304226	7	4
32195	302637	10	92	80256	304325	2	3
80256	302647	9	67	80256	304446	10	17
80256	302661	6	14	80256	304447	10	18
80256	302672	6	19	80256	304452	10	15
32195	302703	10	59	32195	304517	10	49
32195	302709	10	61	21119	304573	10	80
80256	302721	10	57	32195	304575	11	10
80256	302743	11	55	32195	304709	7	32

NATIONAL STOCK NUMBER AND PART NUMBER INDEX

STOCK NUMBER	FIGURE NO.	ITEM NO.	STOCK NUMBER	FIGURE NO.	ITEM NO.
2910-00-001-3841	4	26	5305-00-126-7405	10	57
5305-00-001-9023	9	71	3120-00-126-7406	10	59
5305-00-001-9026	9	74	5305-00-127-2383	10	24
5315-00-001-9027	7	2	5305-00-127-2399	6	8
5310-00-001-9028	10	73	5315-00-128-6651	9	63
5310-00-001-9029	6	10	2910-00-131-1363	7	15
5310-00-001-9031	10	90	5305-00-131-1364	9	40
5305-00-001-9034	7	21	5305-00-131-1365	9	44
2810-00-001-9036	4	20	5940-00-134-0700	3	7
5320-00-001-9101	1	16	5940-00-134-0700	3	12
5306-00-014-3331	1	34	5940-00-134-0700	3	21
5365-00-027-0900	8	24	5940-00-134-0700	3	53
5305-00-028-7939	2	8	5315-00-141-1687	11	46
5305-00-040-3566	3	48	5305-00-142-4171	11	15
5330-00-059-5407	10	5	5305-00-145-7019	4	2
5305-00-068-0502	9	1	5305-00-145-7019	7	22
5305-00-068-0502	9	60	5305-00-150-4841	9	55
2910-00-077-1685	10	83	5310-00-153-2036	3	49
2920-00-077-1702	3	6	5307-00-176-0743	10	49
2805-00-077-1708	7	28	5315-00-176-6481	10	100
2805-00-077-1714	9	22	5306-00-177-5161	2	2
2805-00-077-1715	9	45	5305-00-177-5776	7	31
2805-00-077-1720	10	128	5340-00-178-3881	9	59
2805-00-077-1723	10	124	5305-00-181-0799	5	1
2805-00-077-1724	10	86	5305-00-181-0808	7	20
5310-00-077-1729	11	74	5315-00-200-3586	10	2
2805-00-077-1737	2	14	5315-00-200-3586	10	119
5306-00-077-1768	8	6	5315-00-200-3586	11	65
2805-00-077-1769	9	43	5306-00-206-1372	9	72
5330-00-078-2645	11	35	5305-00-225-3842	9	19
3020-00-078-2648	11	61	5305-00-235-4474	3	33
3020-00-078-2652	11	57	5360-00-236-9335	4	14
2805-00-078-2654	11	68	2805-00-236-9338	4	13
3040-00-078-2655	11	69	5360-00-236-9390	10	102
2805-00-078-2690	11	59	2805-00-236-9412	9	61
3110-00-078-2691	11	71	5330-00-238-7349	1	43
2805-00-078-2993	11	8	5315-00-241-7332	11	7
2805-00-078-2995	4	31	2805-00-243-9534	12	5
5310-00-081-4081	4	9	2805-00-243-9537	12	4
4730-00-088-8878	4	33	3110-00-245-3682	8	25
5325-00-089-8977	11	18	2805-00-250-9979	1	12
5330-00-090-4772	8	23	5315-00-251-9344	11	66
5330-00-090-4799	8	17	2920-00-254-5108	3	52
5330-00-102-8473	10	12	5315-00-255-1001	7	7
4730-00-102-9766	4	38	5310-00-262-5135	10	56
2805-00-102-9835	8	11	5310-00-266-0489	2	7
2805-00-102-9836	8	12	5330-00-274-7762	6	21
2805-00-103-9324	11	40	5310-00-276-2996	3	40
3120-00-115-1283	11	56	5305-00-276-8536	3	26
2910-00-115-2547	1	10	5305-00-281-3144	3	31
2910-00-115-4279	5	6	5305-00-281-3145	9	23
2910-00-115-4306	4	40	5330-00-290-8759	10	121
5305-00-118-1337	2	16	5330-00-291-2374	10	36
2805-00-118-5029	10	123	5310-00-291-4101	1	3
5310-00-118-5052	7	3	5330-00-291-4856	11	34
5310-00-118-5054	3	1	2805-00-305-8703	11	47
5310-00-118-5079	10	88	2990-00-353-1660	3	3
5305-00-121-2988	10	40	2805-00-353-1662	2	17
2990-00-121-5904	10	60	5330-00-353-1730	10	92
5305-00-121-8069	10	28	3120-00-353-1741	11	55
5305-00-121-8117	7	5	2990-00-353-1804	2	23
5305-00-121-8155	3	30	5315-00-369-8400	7	4
5305-00-121-8240	6	9	2805-00-369-8442	10	99
5330-00-121-8241	11	41	2910-00-369-8449	4	7
5310-00-121-8284	1	44	2910-00-369-8760	4	4
5310-00-121-8328	7	10	2910-00-369-8762	4	39
5310-00-121-8338	1	28	4730-00-374-2045	9	67
5310-00-121-8379	6	25	4730-00-400-2262	9	69
5310-00-123-2608	10	29	4730-00-400-2264	10	101
5310-00-123-2609	10	8	2910-00-400-2378	4	30
5310-00-123-2610	1	6	2805-00-400-2379	6	26
5310-00-123-2610	1	49	2910-00-400-6878	4	22
5310-00-123-2610	9	18	2910-00-400-6879	4	6
5310-00-123-2610	10	33	5310-00-405-5456	9	73
5360-00-124-0612	10	81	5310-00-405-5458	7	30
5305-00-124-1190	9	33	5305-00-409-2973	4	19
5365-00-124-1205	9	27	5315-00-409-2979	7	9
4720-00-125-3265	BULK		5305-00-423-7658	1	55
2805-00-126-7392	1	54	5305-00-435-0562	1	2
5315-00-126-7401	10	61	5305-00-450-5745	2	1

NATIONAL STOCK NUMBER AND PART NUMBER INDEX

STOCK NUMBER	FIGURE NO.	ITEM NO.	STOCK NUMBER	FIGURE NO.	ITEM NO.
2910-00-468-4324	4	15	5305-01-072-3036	10	15
5315-00-470-5982	6	22	5340-01-072-3038	9	42
2910-00-470-7808	4	5	5340-01-072-3042	6	5
2910-00-470-8257	4	12	5340-01-072-3043	1	11
5310-00-470-8365	4	3	5305-01-072-3056	1	41
2910-00-470-8775	4	11	5305-01-072-3057	11	1
5305-00-470-8781	6	28	5305-01-072-3057	11	2
5305-00-470-8781	7	18	5305-01-072-3059	11	44
5310-00-470-9832	7	29	2805-01-072-3071	9	52
5305-00-482-1532	9	48	3110-01-072-3072	11	54
2990-00-482-1534	6	36	3110-01-072-3073	11	60
5330-00-484-9922	1	40	5315-01-074-9091	10	55
6680-00-485-9528	4	18	5315-01-077-0410	10	115
5310-00-492-6019	10	25	3120-01-077-0412	10	79
2805-00-524-3072	11	52	4010-01-077-0413	10	125
5310-00-543-2740	11	16	3120-01-077-0417	10	46
5330-00-544-6419	7	26	5310-01-077-0420	10	71
5315-00-552-2152	2	11	5310-01-077-0421	6	1
5305-00-563-4906	10	64	5340-01-077-0432	10	132
5305-00-564-4392	10	32	5310-01-078-6163	9	10
5310-00-564-4402	3	5	5305-01-078-6165	10	10
6680-00-599-9410	4	16	5310-01-078-6166	10	52
5310-00-658-3521	10	51	5305-01-078-6168	10	21
5360-00-664-1360	10	91	5305-01-078-6169	10	72
5360-00-664-3928	10	67	5305-01-078-6173	10	109
5365-00-687-3379	8	1	5360-01-078-6280	9	12
5330-00-731-9084	4	21	5340-01-078-6281	9	11
5310-00-733-2298	10	58	2990-01-078-6288	10	22
5330-00-735-2810	4	23	3010-01-078-6292	10	3
2805-00-736-0123	10	111	4310-01-078-6296	8	4
2805-00-736-0124	10	114	4310-01-078-6298	8	4
2805-00-736-0125	10	112	3020-01-078-6312	10	78
2805-00-736-0126	10	80	5305-01-078-6313	10	13
5305-00-757-6568	3	2	4730-01-078-6318	10	4
5310-00-760-7866	11	72	5340-01-078-6377	10	23
5310-00-761-4240	2	9	5305-01-078-6400	9	9
5360-00-763-7076	10	127	5365-01-079-9917	10	120
2805-00-763-7093	11	33	5305-01-079-9918	1	25
3120-00-764-7515	10	39	5305-01-079-9919	10	44
3120-00-764-7522	11	75	4810-01-081-9329	9	56
2805-00-764-7526	10	103	2990-01-082-2496	9	39
2805-00-764-7526	11	62	5330-01-083-2213	4	8
5360-00-764-7527	11	63	5910-01-086-7053	3	39
3120-00-778-6007	2	15	4720-01-086-8666	BULK	
5310-00-778-6012	2	13	2920-01-087-4982	3	27
2990-00-778-6032	2	10	5305-01-088-3315	1	36
2910-00-778-6292	4	37	2990-01-088-5191	2	6
5306-00-795-6951	9	3	5340-01-090-8573	5	10
5310-00-797-5800	10	14	5340-01-091-0855	5	13
2910-00-810-4023	7	32	5330-01-091-0856	8	21
2910-00-815-4027	7	34	5330-01-091-0857	8	15
5310-00-827-3014	10	16	2805-01-091-0858	8	20
5315-00-829-0227	9	62	5340-01-091-0859	3	17
2805-00-866-9640	4	32	5330-01-099-8870	6	3
5330-00-866-9656	4	10	5330-01-099-8871	6	13
5330-00-871-7119	4	24	5360-01-100-0193	6	23
2920-00-872-1486	2	3	3110-01-101-5721	3	42
5365-00-893-9927	11	38	3040-01-105-4351	9	17
2910-00-919-7366	4	17	5310-01-109-9679	9	54
4710-00-922-2259	BULK		5315-01-109-9680	8	2
5305-00-954-3487	7	27	2090-01-109-9681	8	14
2805-00-983-6698	BULK		2920-01-109-9685	3	
5310-00-987-0361	10	77	5310-01-110-8437	9	35
5310-00-987-0368	10	68	4730-01-110-8473	9	14
5305-00-987-0373	11	36	5305-01-110-8476	9	15
5310-00-987-0386	9	31	3120-01-110-8501	10	62
2805-00-987-2069	10	66	5305-01-110-8531	6	30
2805-00-987-2073	10	76	4730-01-110-8631	5	8
2805-00-987-2095	11	50	2940-01-111-6485	5	11
5305-01-003-8066	10	82	2805-01-119-5688	1	60
4020-01-011-0665	BULK		2805-01-119-5689	3	10
5310-01-013-6871	9	65	2805-01-119-5690	8	3
5360-01-014-9412	10	116	2805-01-119-5691	8	26
2990-01-014-9413	10	122	2805-01-119-5692	9	7
2990-01-014-9417	10	35	2805-01-119-5693	9	58
2910-01-014-9420	5	3	2805-01-119-5694	10	53
5330-01-027-2872	9	57	2805-01-119-5695	10	54
5325-01-072-3005	2	19	2805-01-119-5696	10	93
5360-01-072-3006	2	20	2805-01-119-5697	12	6
5305-01-072-3035	6	4	2805-01-126-9425	11	11

NATIONAL STOCK NUMBER AND PART NUMBER INDEX

STOCK NUMBER	FIGURE NO.	ITEM NO.	STOCK NUMBER	FIGURE NO.	ITEM NO.
5305-00-001-9038	5	4	2990-01-133-4103	9	2
4730-00-050-4203	10	130	3020-01-133-7410	11	43
5330-00-053-0756	5	2	2930-01-133-7738	11	
2805-00-057-6908	1	58	4730-01-133-7740	1	50
5330-00-057-6910	10	27	2910-01-133-7859	5	5
5330-00-057-6911	9	21	4710-01-133-7895	3	16
5330-00-057-6912	9	53	2920-01-133-7957	9	6
5330-00-059-5412	7	1	2990-01-133-7993	9	20
5315-00-077-1739	8	13	2990-01-133-7994	9	51
5330-00-078-2668	9	8	2010-01-133-7995	11	64
2805-00-078-2683	8	5	5305-01-133-9196	9	30
3040-00-115-2555	7	6	5325-01-133-9400	1	59
5330-00-115-4278	5	7	2990-01-133-9913	7	23
5306-00-118-5080	10	89	5305-01-134-0069	3	43
5307-00-119-0480	7	24	5340-01-134-0070	9	49
5310-00-121-8265	1	27	5340-01-134-0071	9	64
5310-00-121-8288	9	36	5305-01-134-0072	9	66
5310-00-121-8288	10	1	5310-01-134-0073	10	7
5310-00-121-8370	6	2	5365-01-134-0074	10	37
5940-00-123-1061	3	13	5305-01-134-0075	10	75
5315-00-126-3640	9	25	5305-01-134-0076	10	84
4730-00-126-8435	10	47	5305-01-134-0166	1	48
2920-00-132-4676	1	26	5340-01-134-0168	10	9
2920-00-132-4676	10	74	5330-01-134-0218	11	26
5310-00-176-6433	9	41	5330-01-134-0219	11	28
5310-00-176-6464	1	8	5330-01-134-0777	1	21
5340-00-178-3878	10	126	5310-01-134-1942	1	45
5365-00-275-4566	1	47	5310-01-134-2051	9	16
5330-00-369-8413	9	28	2805-01-134-2204	3	4
3040-00-400-2377	11	67	5306-01-134-3245	10	31
5330-00-484-9936	11	5	5305-01-134-3273	11	3
5315-00-504-8826	11	10	5330-01-134-3295	11	22
5305-00-574-5064	3	37	5330-01-134-3296	11	53
5310-00-658-3521	1	52	5305-01-134-5523	1	6
5365-00-757-4315	10	38	5305-01-134-5524	1	29
5360-00-763-0754	10	87	5305-01-134-5525	1	30
5360-00-763-7073	10	110	5305-01-134-5526	1	53
5360-00-810-4037	7	13	5305-01-134-5527	3	36
5330-00-866-9652	10	19	5305-01-134-5528	9	37
5310-00-922-5652	10	97	5305-01-134-5662	10	96
5310-00-922-5652	10	107	5305-01-134-5662	10	106
2990-01-115-6984	9	29	3020-01-134-7181	11	70
5330-01-115-7056	9	4	5340-01-135-3968	6	
5330-01-115-7057	8	18	5320-01-135-4183	1	14
3120-01-119-4442	9	34	2990-01-135-4703	2	4
5365-01-123-5914	8	19	3120-01-135-9535	11	9
5360-01-123-5915	9	26	5365-01-136-6200	11	12
2990-01-123-5917	3	38	2920-01-137-8740	2	5
5305-01-123-5918	3	45	2910-01-138-6686	6	32
5360-01-123-5919	9	38	4720-01-139-4519	5	9
2805-01-127-9951	3	9	3040-01-139-4520	10	70
2805-01-127-9961	10	65	3040-01-139-5061	11	29
5940-01-132-8243	3	25			
4910-01-132-9147	12	7			
5940-01-132-9218	3	8			
5940-01-132-9218	3	14			
5940-01-132-9218	3	20			
5940-01-132-9218	3	54			
3040-01-133-2033	2	18			
2910-01-133-3602	1	38			
2910-01-133-3603	6	33			
2910-01-133-3604	12	8			
5330-01-133-3768	9				

By Order of the Secretary of the Army:

Official:


ROBERT M. JOYCE
Major General, United States Army
The Adjutant General

E. C. MEYER
General, United States Army
Chief of Staff

DISTRIBUTION:

To be distributed in accordance with DA Form 12-25D, Organizational Maintenance Requirements for Rail, Marine, and Amphibious Equipment: Outboard Motors.

RECOMMENDED CHANGES TO EQUIPMENT TECHNICAL PUBLICATIONS

 <p style="font-size: small; margin: 0;"><i>THEN...JOT DOWN THE DOPE ABOUT IT ON THIS FORM. CAREFULLY TEAR IT OUT, FOLD IT AND DROP IT IN THE MAIL.</i></p>		SOMETHING WRONG WITH PUBLICATION	
		FROM: (PRINT YOUR UNIT'S COMPLETE ADDRESS)	
		DATE SENT	
PUBLICATION NUMBER		PUBLICATION DATE	PUBLICATION TITLE
IN THIS SPACE, TELL WHAT IS WRONG AND WHAT SHOULD BE DONE ABOUT IT.			
BE EXACT PIN-POINT WHERE IT IS			
PAGE NO.	PARA-GRAPH	FIGURE NO.	TABLE NO.
PRINTED NAME, GRADE OR TITLE AND TELEPHONE NUMBER		SIGN HERE	

The Metric System and Equivalents

Linear Measure

1 centimeter = 10 millimeters = .39 inch
 1 decimeter = 10 centimeters = 3.94 inches
 1 meter = 10 decimeters = 39.37 inches
 1 dekameter = 10 meters = 32.8 feet
 1 hectometer = 10 dekameters = 328.08 feet
 1 kilometer = 10 hectometers = 3,280.8 feet

Weights

1 centigram = 10 milligrams = .15 grain
 1 decigram = 10 centigrams = 1.54 grains
 1 gram = 10 decigrams = .035 ounce
 1 decagram = 10 grams = .35 ounce
 1 hectogram = 10 decagrams = 3.52 ounces
 1 kilogram = 10 hectograms = 2.2 pounds
 1 quintal = 100 kilograms = 220.46 pounds
 1 metric ton = 10 quintals = 1.1 short tons

Liquid Measure

1 centiliter = 10 milliliters = .34 fl. ounce
 1 deciliter = 10 centiliters = 3.38 fl. ounces
 1 liter = 10 deciliters = 33.81 fl. ounces
 1 dekaliter = 10 liters = 2.64 gallons
 1 hectoliter = 10 dekaliters = 26.42 gallons
 1 kiloliter = 10 hectoliters = 264.18 gallons

Square Measure

1 sq. centimeter = 100 sq. millimeters = .155 sq. inch
 1 sq. decimeter = 100 sq. centimeters = 15.5 sq. inches
 1 sq. meter (centare) = 100 sq. decimeters = 10.76 sq. feet
 1 sq. dekameter (are) = 100 sq. meters = 1,076.4 sq. feet
 1 sq. hectometer (hectare) = 100 sq. dekameters = 2.47 acres
 1 sq. kilometer = 100 sq. hectometers = .386 sq. mile

Cubic Measure

1 cu. centimeter = 1000 cu. millimeters = .06 cu. inch
 1 cu. decimeter = 1000 cu. centimeters = 61.02 cu. inches
 1 cu. meter = 1000 cu. decimeters = 35.31 cu. feet

Approximate Conversion Factors

<i>To change</i>	<i>To</i>	<i>Multiply by</i>	<i>To change</i>	<i>To</i>	<i>Multiply by</i>
inches	centimeters	2.540	ounce-inches	Newton-meters	.007062
feet	meters	.305	centimeters	inches	.394
yards	meters	.914	meters	feet	3.280
miles	kilometers	1.609	meters	yards	1.094
square inches	square centimeters	6.451	kilometers	miles	.621
square feet	square meters	.093	square centimeters	square inches	.155
square yards	square meters	.836	square meters	square feet	10.764
square miles	square kilometers	2.590	square meters	square yards	1.196
acres	square hectometers	.405	square kilometers	square miles	.386
cubic feet	cubic meters	.028	square hectometers	acres	2.471
cubic yards	cubic meters	.765	cubic meters	cubic feet	35.315
fluid ounces	milliliters	29.573	cubic meters	cubic yards	1.308
pints	liters	.473	milliliters	fluid ounces	.034
quarts	liters	.946	liters	pints	2.113
gallons	liters	3.785	liters	quarts	1.057
ounces	grams	28.349	liters	gallons	.264
pounds	kilograms	.454	grams	ounces	.035
short tons	metric tons	.907	kilograms	pounds	2.205
pound-feet	Newton-meters	1.356	metric tons	short tons	1.102
pound-inches	Newton-meters	.11296			

Temperature (Exact)

°F	Fahrenheit temperature	5/9 (after subtracting 32)	Celsius temperature	°C
----	------------------------	----------------------------	---------------------	----

